



PUNCH PRESS TOOLS



www.egp-universe.com

CONTENTS	PAGE
COMPANY PROFILE	2
A STATION THICK TURRET SERIES OVERVIEW	3-6
B STATION THICK TURRET SERIES OVERVIEW	7-10
C STATION THICK TURRET SERIES OVERVIEW	11-13
D STATION THICK TURRET SERIES OVERVIEW	14-16
E STATION THICK TURRET SERIES OVERVIEW	17-18
PATENT TOOLS OVERVIEW	19-23
A STATION COMPLETE SET SECTION VIEW	24-25
B STATION COMPLETE SET SECTION VIEW	26-27
C STATION COMPLETE SET SECTION VIEW	28-30
D STATION COMPLETE SET SECTION VIEW	31-33
PATENT TOOLS SECTION VIEW	34-38
MULTI-TOOLS & INSERT TOOL	39
CLUSTER	40
MATE TYPE - TRM TYPE - MURATA TYPE	41
SLV TYPE - ERM TYPE	42
FORMING TOOLS	43-55
LOGO	44
CENTERPOINT	45
HALF SHEAR	46
EXTRUSION	47
EMBOSS & EXTRUSION - STAMPING	48
EMBOSS	49
BRIDGE	50
LANCE AND FORM	51
LOUVER	52
HINGLE-RIB TOOL	53
KNOCKOUT	54
COUNTERSINK	55
ADAPTOR	56
ALIGNMENT TOOL	57
SHIM-KEY	58
CLAMP	59
EXXTRAL (AITUN) COATING	60
VALUES OF STROKE ACCORDING TO COATED TYPES	61
GRINDING SHAPES	62
SHAPE CLASSES	63
CLEARANCE TABLE	64

COMPANY PROFILE



Created With Love



EGP Cutting Tools is the leading manufacturer of tooling for CNC punch press for the sheet metal industry in Turkey. It has been serving since 1982 and continuing its activities as an individual enterprise in Tuzla İstanbul Anadolu Yakası Organize Sanayi Bölgesi in 3000 m2 closed area. Our vision is to be a company that offers world-class solutions and services to the customers also being a one of the leading company in the international market. Our mission in accordance with quality standards is, continuous improvement for all range of products and services.

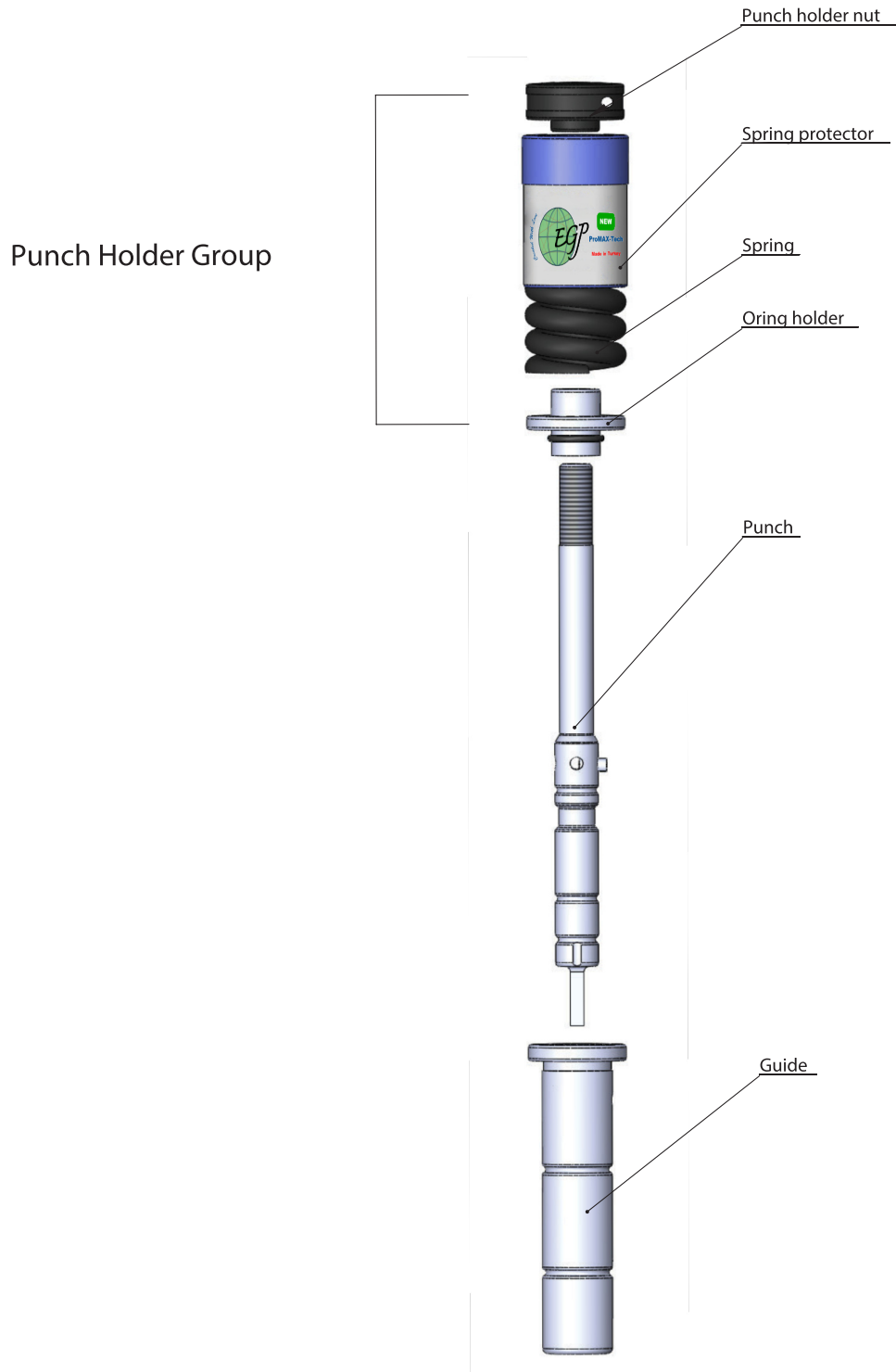


A STATION THICK TURRET SERIES OVERVIEW



Created With Love

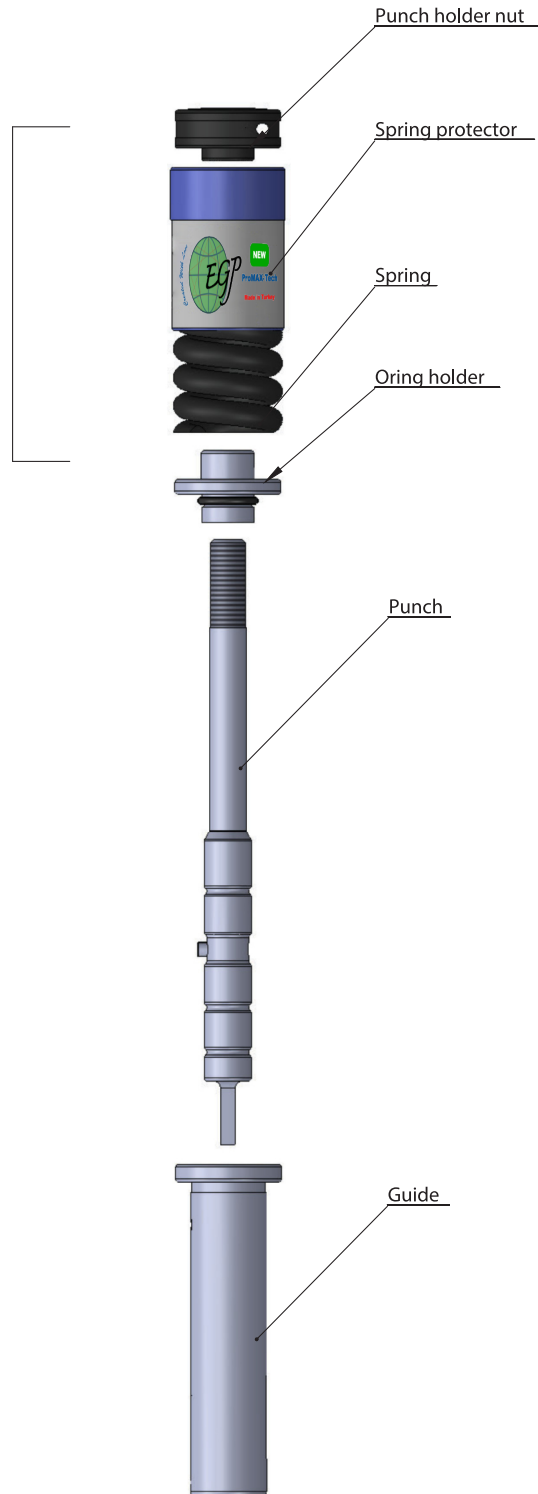
A STATION COMPLETE SET (02-ABS-007 A STATION)



Max. grind life is 2 mm.

A STATION COMPLETE SET (02-007 A STATION)

Punch Holder Group



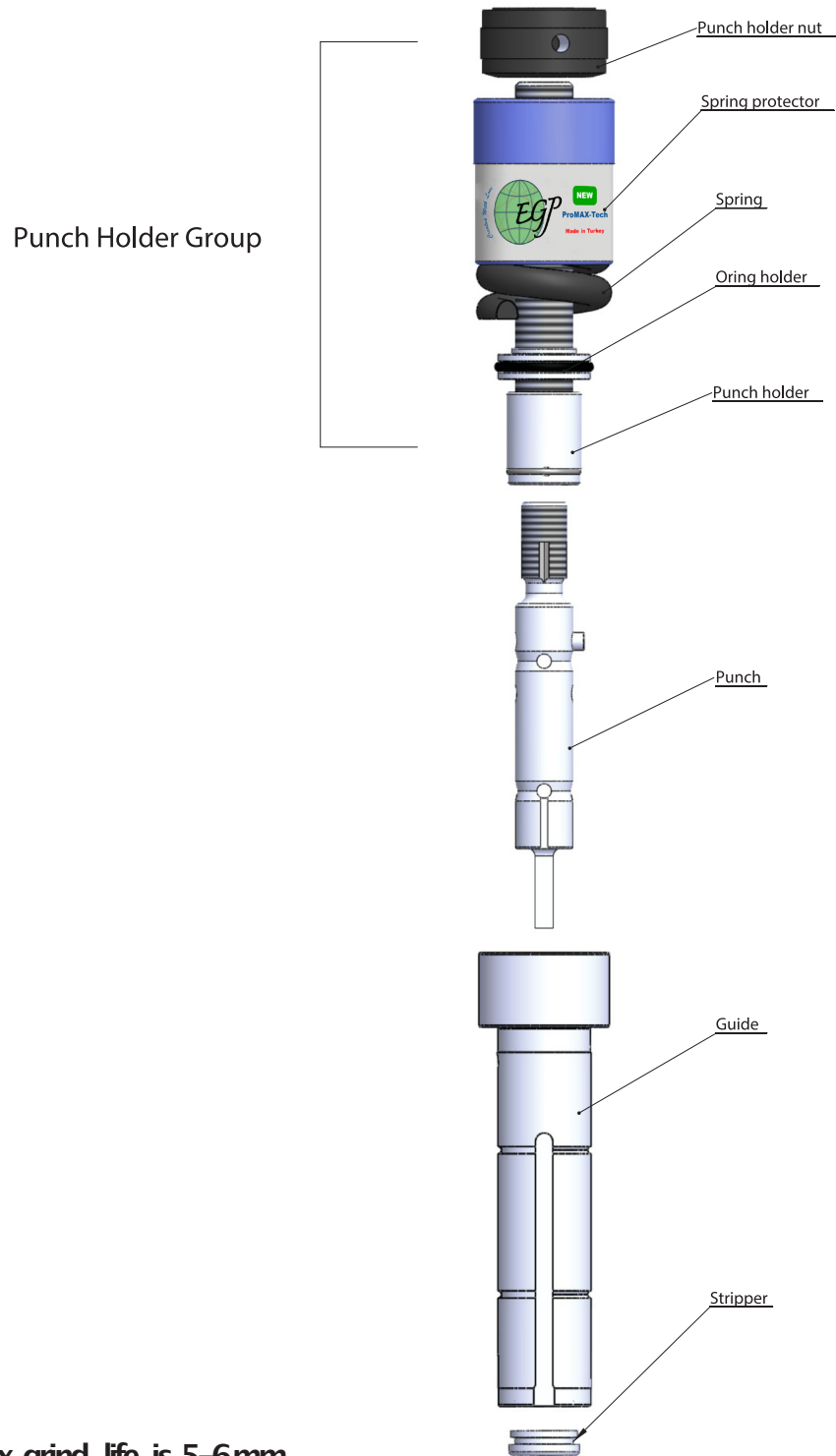
Max. grind life is 2mm.

A STATION THICK TURRET SERIES OVERVIEW



Created With Love

A STATION COMPLETE SET (03-ABS-007 A STATION)



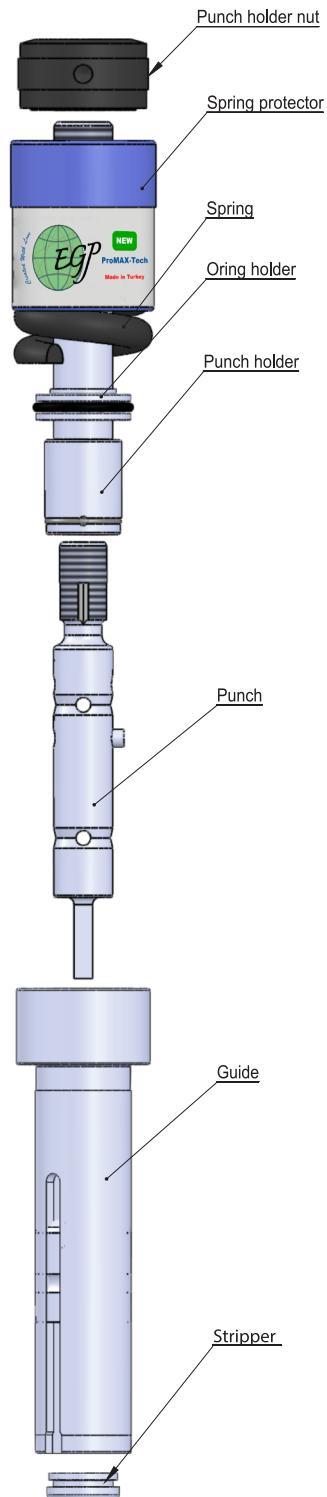
A STATION THICK TURRET SERIES OVERVIEW



Created With Love

A STATION COMPLETE SET (03-007 A STATION)

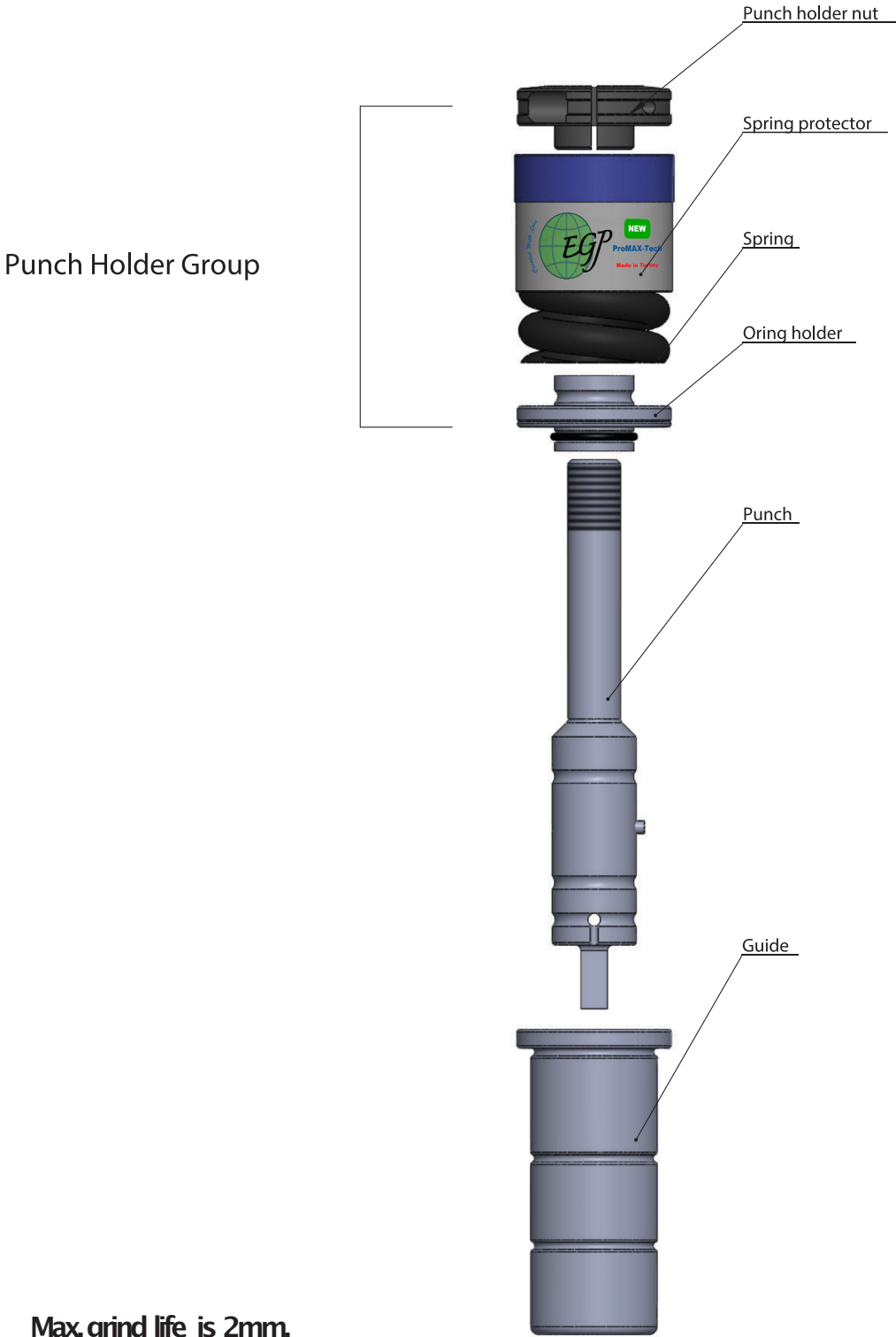
Punch Holder Group



Max. grind life is 5-6mm.



B STATION COMPLETE SET (02-ABS-007 B STATION)



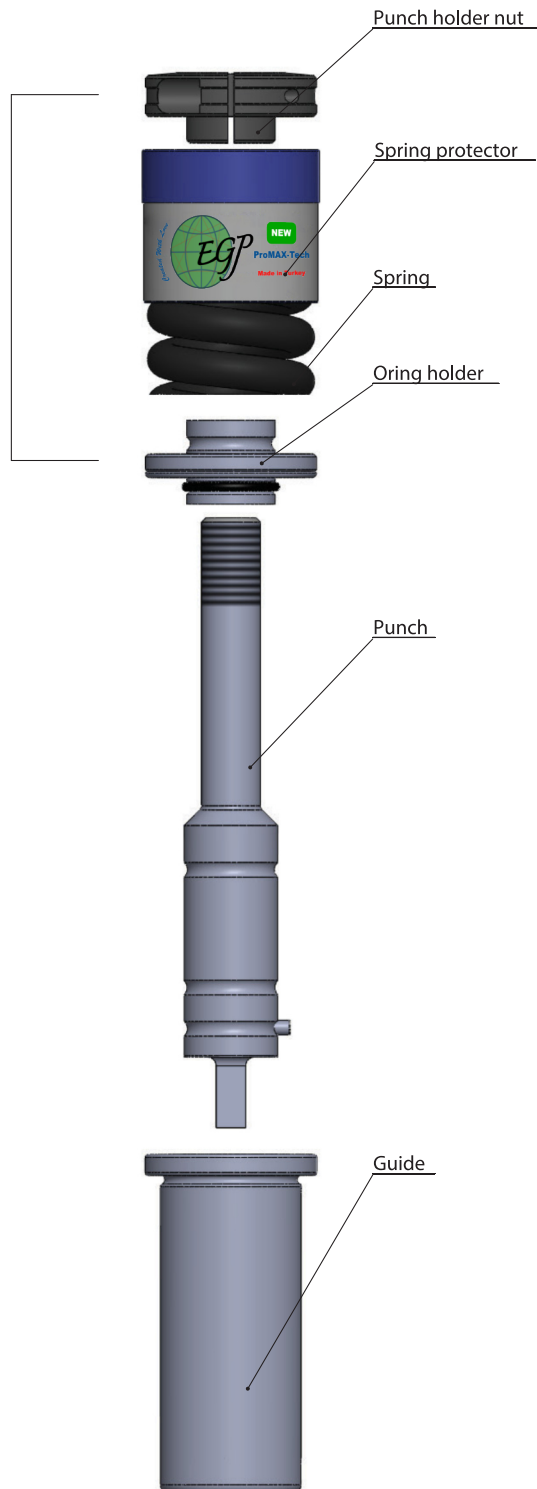
B STATION THICK TURRET SERIES OVERVIEW



Created With Love

B STATION COMPLETE SET (02-007 B STATION)

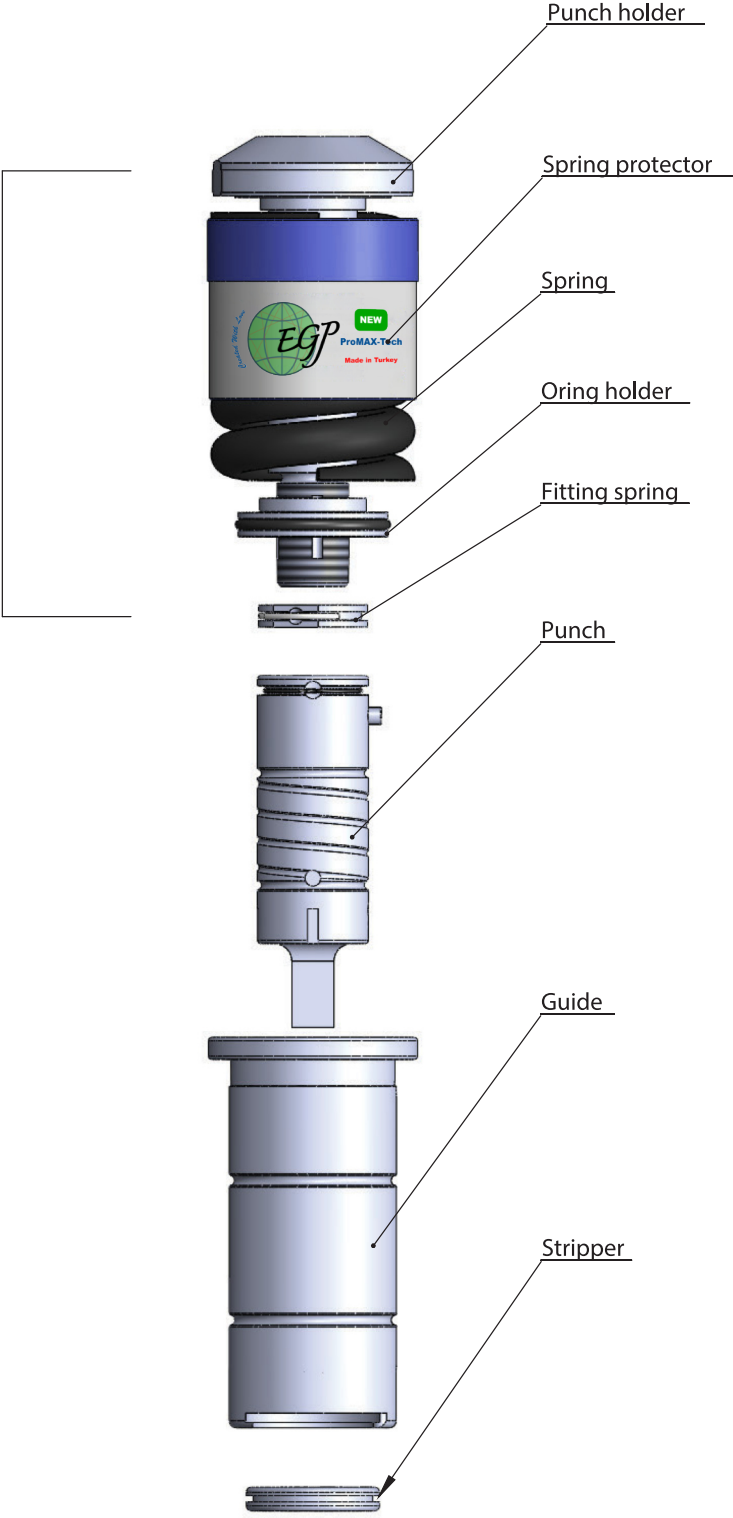
Punch Holder Group



Max. grind life is 2 mm.

B STATION COMPLETE SET (03-ABS-007 B STATION)

Punch Holder Group



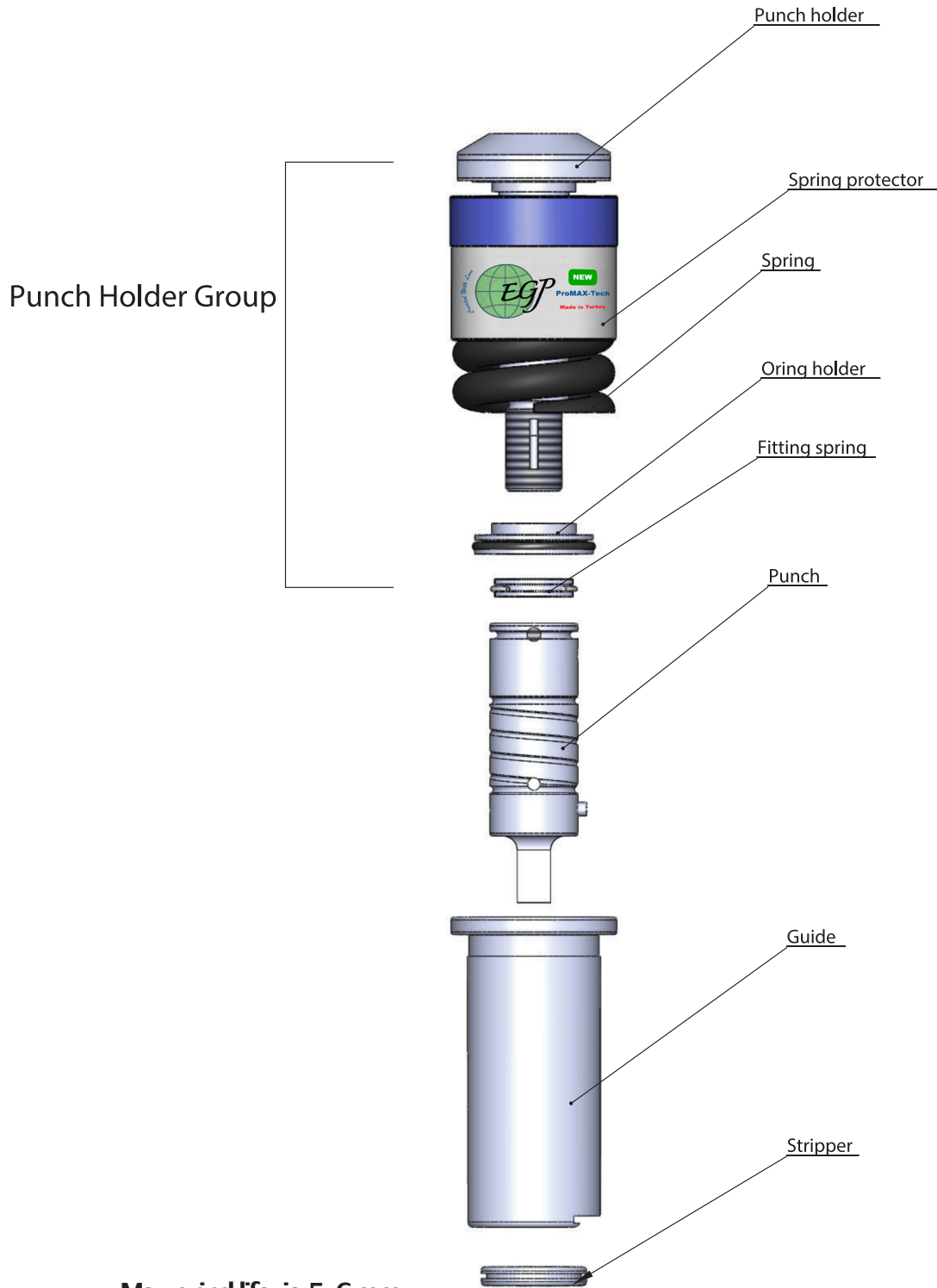
Max. grind life is 5-6mm.

B STATION THICK TURRET SERIES OVERVIEW



Created With Love

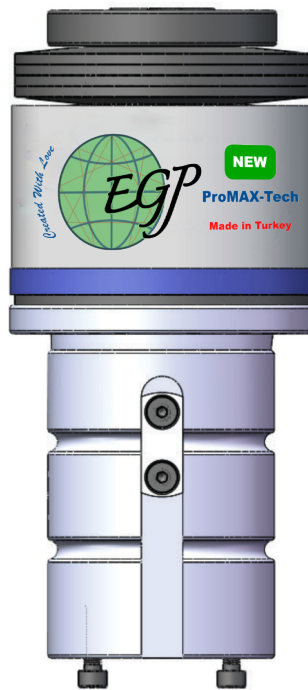
B STATION COMPLETE SET (03-007 B STATION)



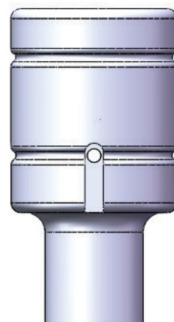
Max. grind life is 5-6mm

C STATION COMPLETE SET (02-ABS-007 C STATION)

Guide Assembly



Punch



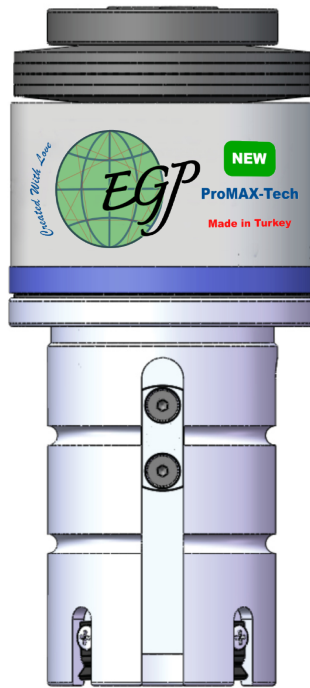
Stripper



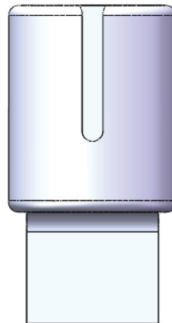
Max. grind life is 5 mm.

C STATION COMPLETE SET (02-007 C STATION)

Guide Assembly



Punch



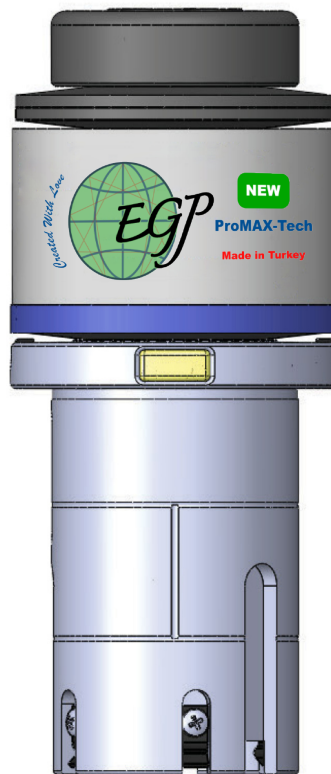
Stripper



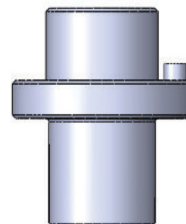
Max. grind life is 5mm.

C STATION COMPLETE SET (03-ABS-007 C STATION)

Guide Assembly



Punch



Stripper



Max. grind life is 5-8mm.

D STATION THICK TURRET SERIES OVERVIEW



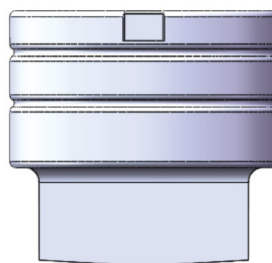
Created With Love

D STATION COMPLETE SET (02-ABS-007 D STATION)

Guide Assembly



Punch



Stripper



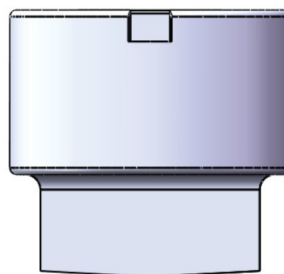
Max. grind life is 5mm.

D STATION COMPLETE SET (02-007 D STATION)

Guide Assembly



Punch



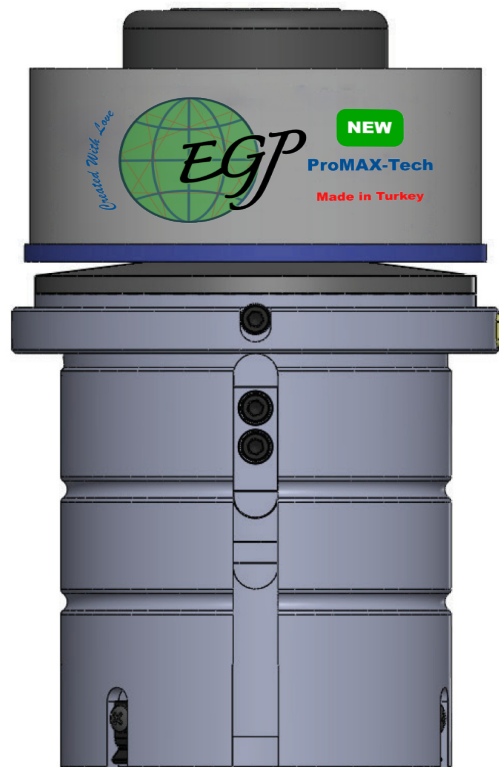
Stripper



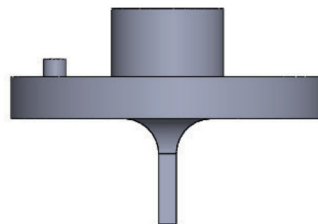
Max. grind life is 5mm.

D STATION COMPLETE SET (03-ABS-007 D STATION)

Guide Assembly



Punch



Stripper



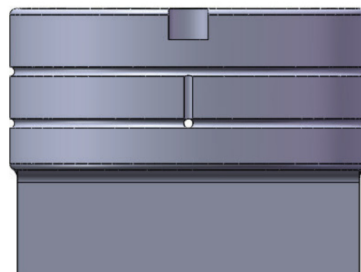
Max. grind life is 5-8mm.

E STATION COMPLETE SET (02-ABS-007 E STATION)

Guide Assembly



Punch



Stripper

Max grind life is 5mm.



E STATION THICK TURRET SERIES OVERVIEW



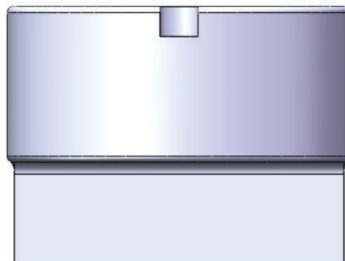
Created With Love

E STATION COMPLETE SET (02-007 E STATION)

Guide Assembly



Punch

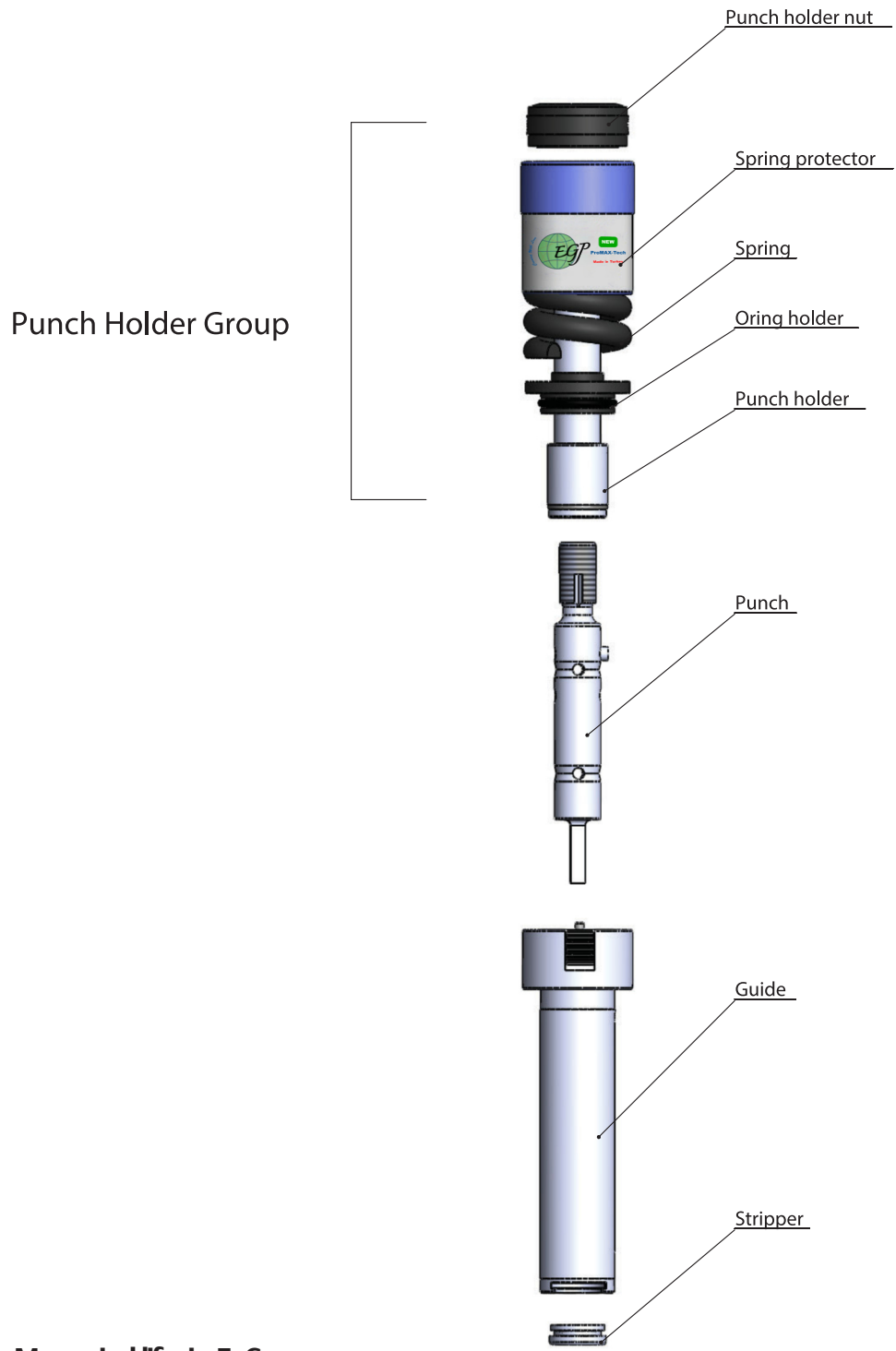


Stripper

Max grind life is 5mm.



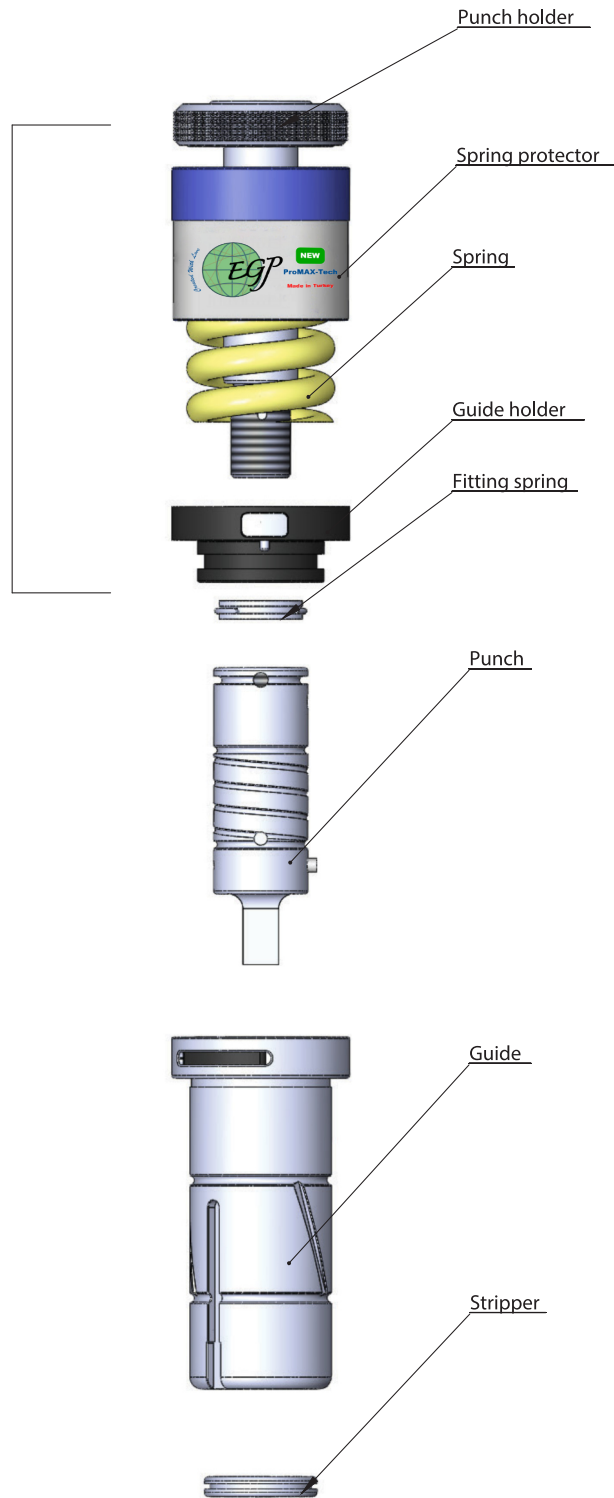
A STATION COMPLETE SET (01-ABS-007 A STATION PATENT TOOL)



Max. grind life is 5-6mm.

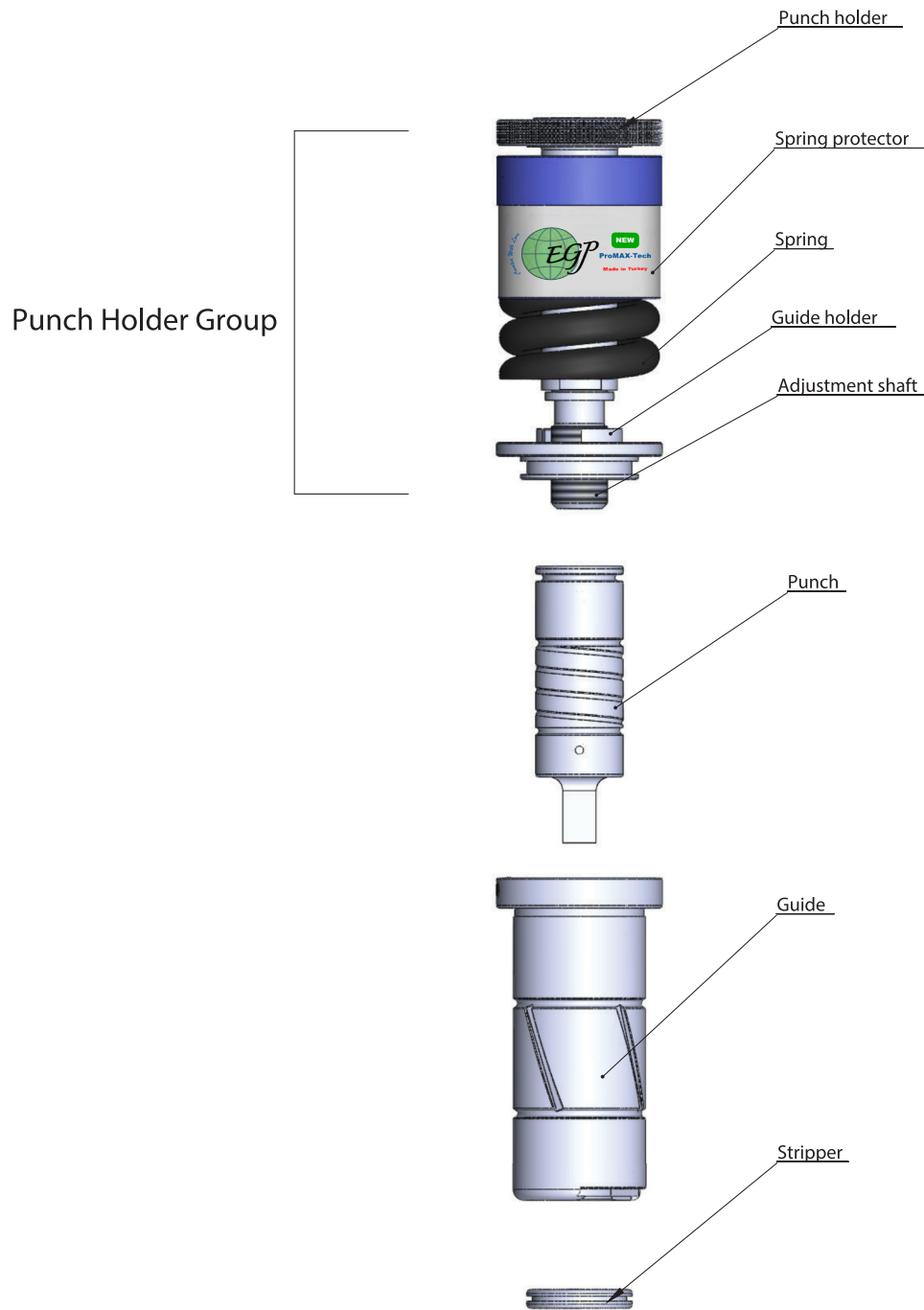
B STATION COMPLETE SET (01-ABS-007 B STATION PATENT TOOL)

Punch Holder Group



Max. grind life is 5-6mm.

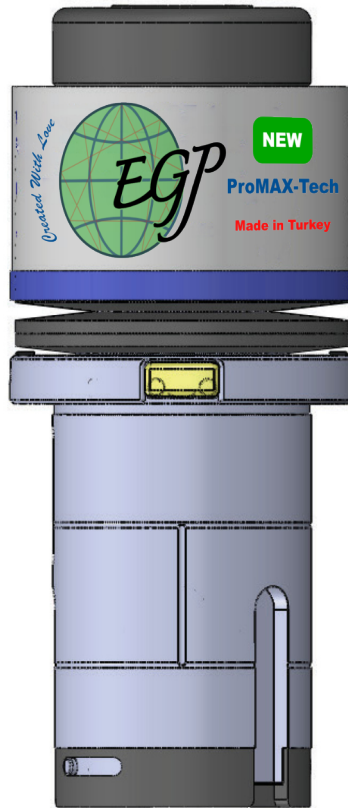
**B STATION COMPLETE SET
(01-ABS-007- B STATION PATENT TOOL FOR THICK SHEET)**



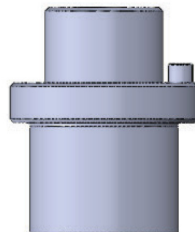
Max. grind life is 10-12mm.

**C STATION COMPLETE SET
(01-ABS-007-AUTO STRIPPER C STATION PATENT TOOL)**

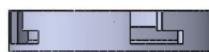
Guide Assembly



Punch



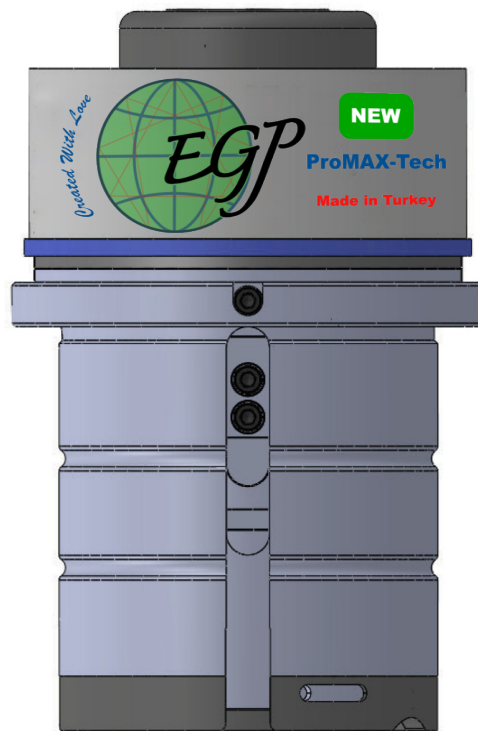
Stripper



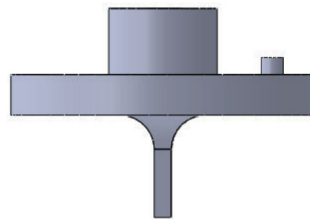
Max. grind life is 5-8mm.

**D STATION COMPLETE SET
(01-ABS-007-AUTO STRIPPER D STATION PATENT TOOL)**

Guide Assembly



Punch

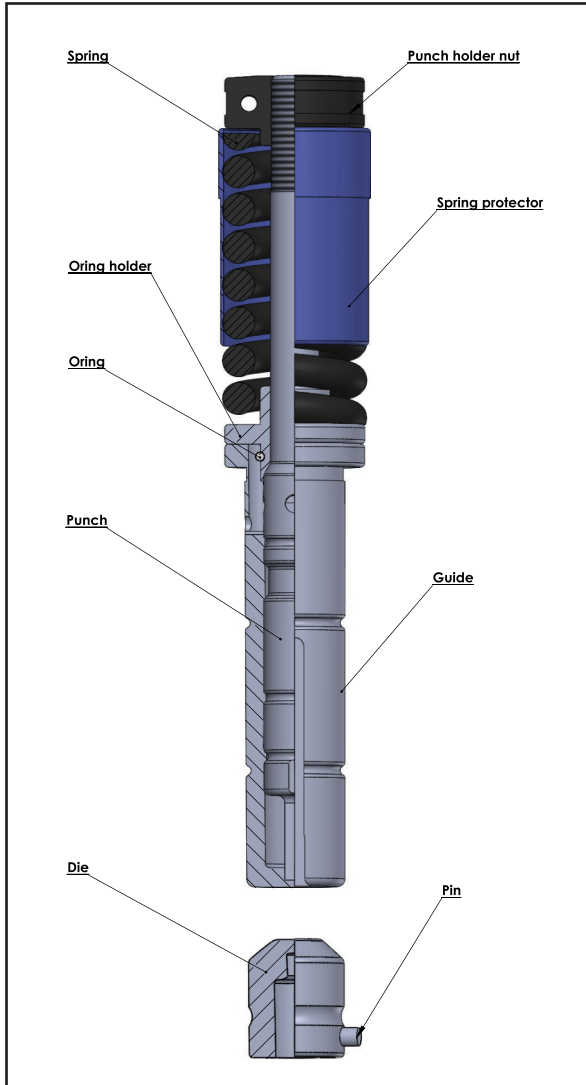


Stripper



Max grind life is 5-8mm.

A STATION COMPLETE SET (02-ABS-007 A STATION)



Round/Shape (1.6-12.7mm)



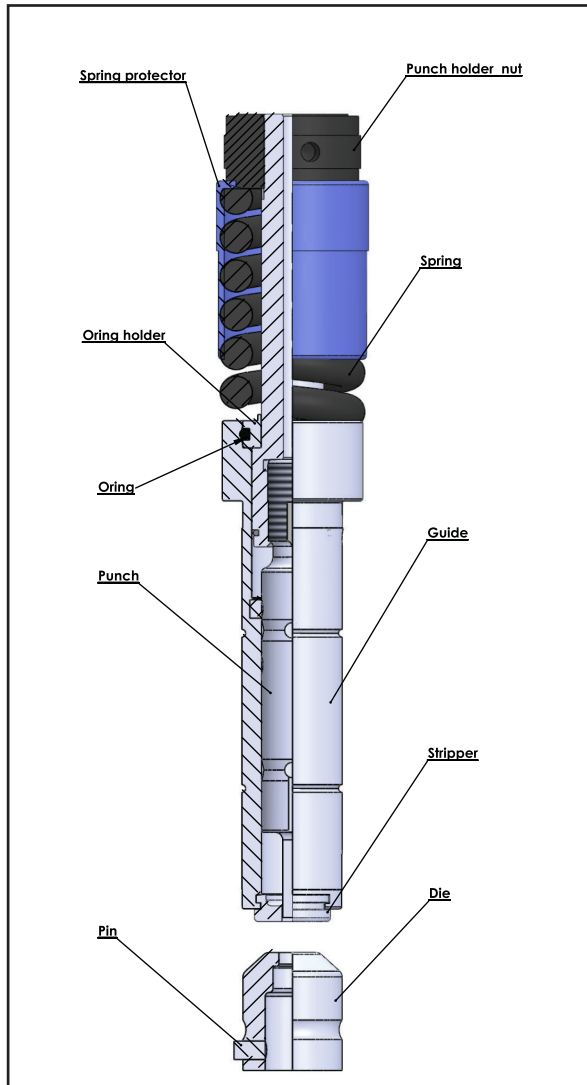
Punch max. thickness is 3.5mm (mild steel)

Note

- Square guide channels are 0°, 90°, 135°.
- Other shape guide channels are 0° and 90°.
- Complete set includes punch holder group, punch, guide and die.
- Punch grind life is 2mm.
- Die grind life is 3.5mm.

Description	Part code
Complete set	02-07-007-01
Punch	02-07-001-01
Die	002-01
Guide	02-07-004-01
Punch holder group	02-07-005-01

A STATION COMPLETE SET (03-ABS-007 A STATION)



Round/Shape (1.6-12.7mm)



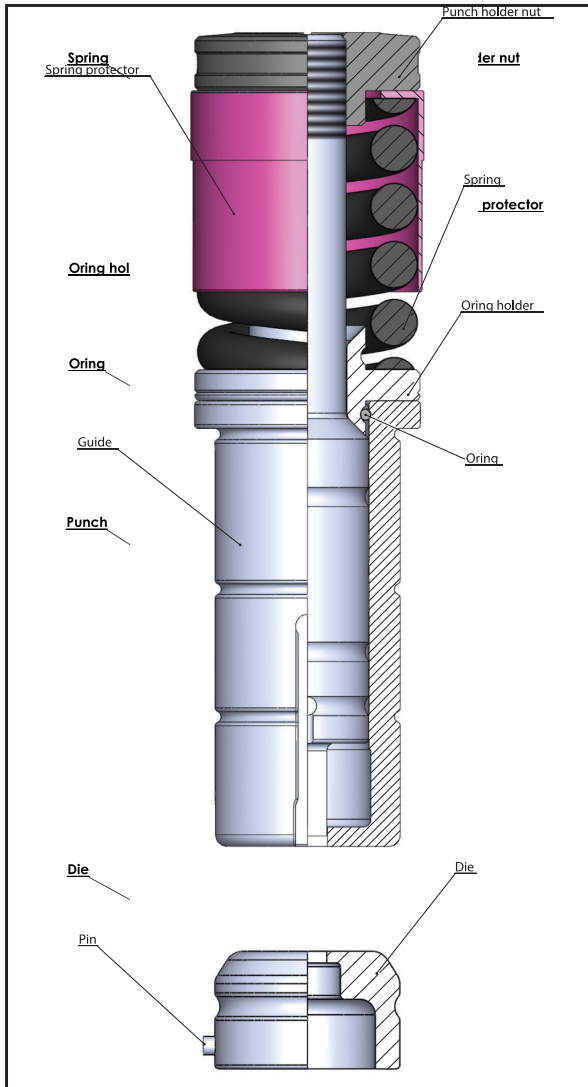
Punch max. thickness is 3.5mm (mild steel)

Note

- Square guide channels are 0°, 90°, 135°.
- Other shape guide channels are 0° and 90°.
- Only punch ,die and stripper alternation is enough in complete set when the size is changed.
- Complete set includes punch holder group , punch, guide, stripper and die.
- Punch grind life is 5-6mm.
- Die grind life is 3.5 mm.

Description	Part code
Complete set	03-007-01
Punch	03-001-01
Die	002-01
Stripper	03-003-01
Guide	03-004-01
Punch holder group	03-005-01

B STATION COMPLETE SET (02-ABS-007 B STATION)



Round/Shape (12.7-31.7mm)



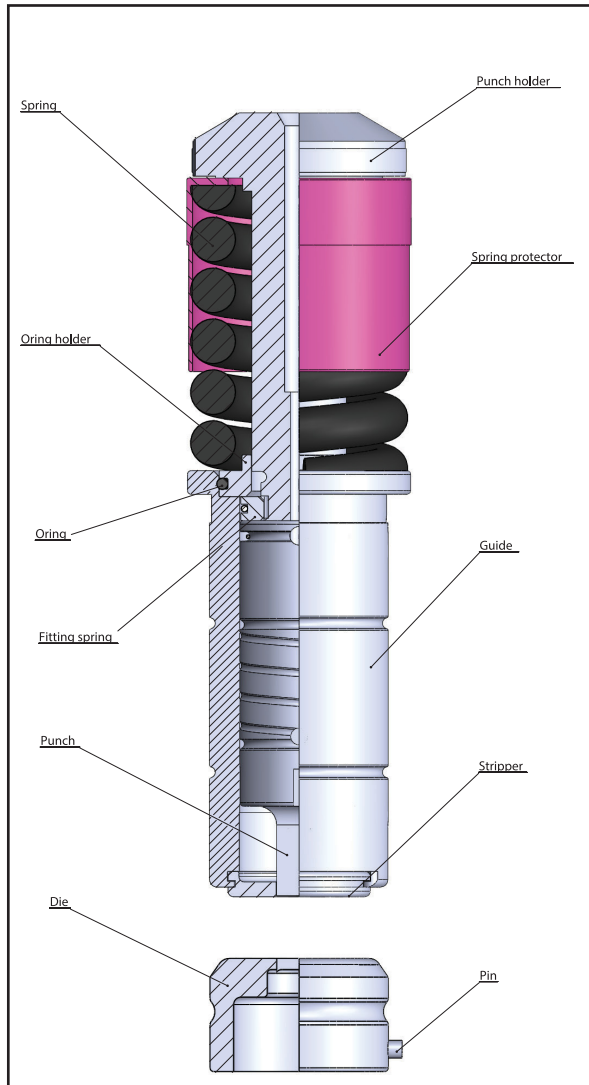
Punch max. thickness is 6.3mm (mild steel)

Note

- Square guide channels are 0°, 90°, 135°.
- Other shape guide channels are 0° and 90°.
- Complete set includes punch holder group, punch, guide and die.
- Punch grind life is 2mm.
- Die grind life is 3.5 mm.

Description	Part code
Complete set	02-07-007-02
Punch	02-07-001-02
Die	002-02
Guide	02-07-004-02
Punch holder group	02-07-005-02

B STATION COMPLETE SET (03-ABS-007 B STATION)



Round/Shape (12.7-31.7mm)



Punch max. thickness is 6.3mm (mild steel)

Note

- Square guide channels are 0°, 90°, 135°.
- Other shape guide channels are 0° and 90°.
- Only punch, die and stripper alternation is enough in complete set when the size is changed.
- Complete set includes punch holder group, punch, guide, stripper and die.
- Punch grind life is 5-6mm.
- Die grind life is 3.5 mm.

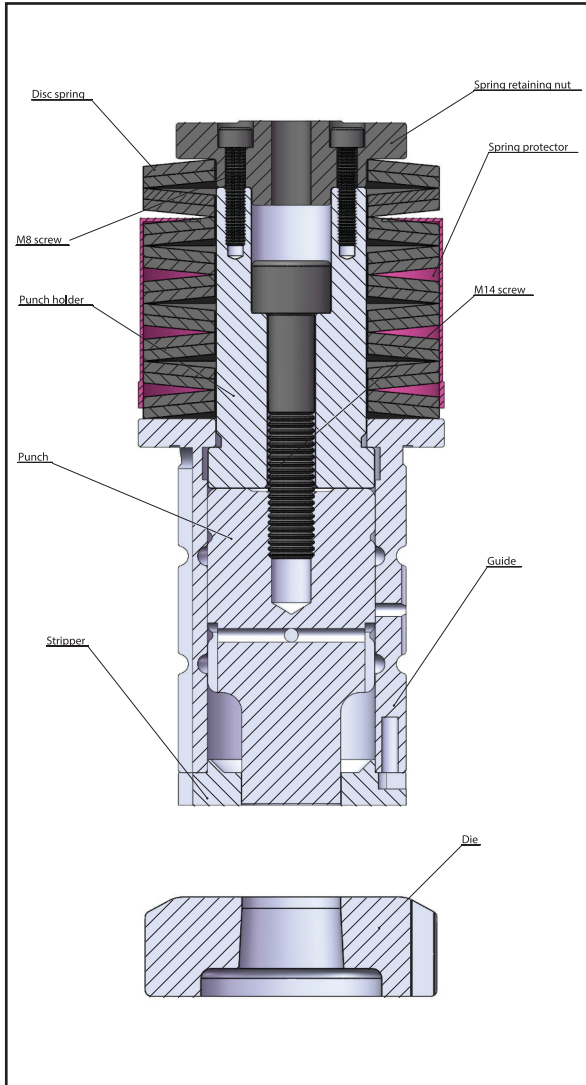
Description	Part code
Complete set	03-007-02
Punch	03-001-02
Die	002-02
Guide	03-004-02
Stripper	03-003-02
Punch holder group	03-005-02

COMPLETE SET SECTION VIEW



Created With Love

C STATION COMPLETE SET (02-ABS-007 C STATION)



Round/Shape (31.7-50.8mm)



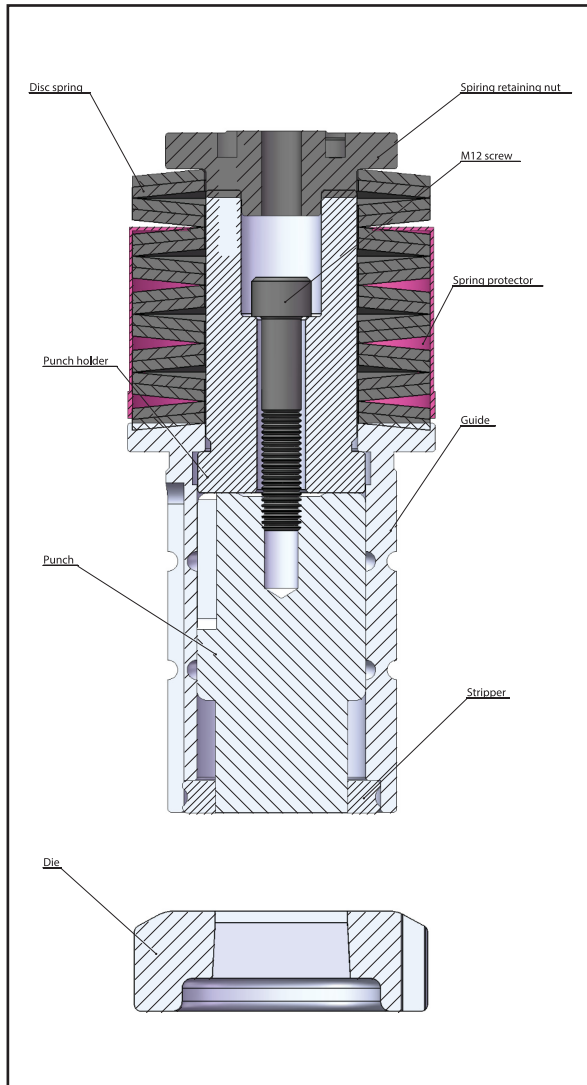
Punch max. thickness is 6.3mm (mild steel)

Note

- Standard guide channels are 0°, 135° and 90°.
- Only punch, die and stripper alternation is enough in complete set when the size is changed.
- Complete set includes punch holdergroup, punch, guide, stripper and die
- Punch grind life together with shimis 5mm.
- Die grind life is 3.5 mm.

Description	Part code
Complete set	02-07-007-03
Punch	02-07-001-03
Die	002-03
Guide	02-07-004-03
Stripper	02-07-003-03
Punch holder group	02-07-005-03

C STATION COMPLETE SET (02-007 C STATION)



Round/Shape (31.7-50.8mm)



Punch max. thickness is 6.3mm (mild steel)

Note

- Standard guide channels are 0°, 135° and 90°.
- Only punch, die and stripper alternation is enough in complete set when the size is changed.
- Complete set includes punch holder group, punch, guide, stripper and die.
- Punch grind life together with shim is 5mm.
- Die grind life is 3.5 mm.

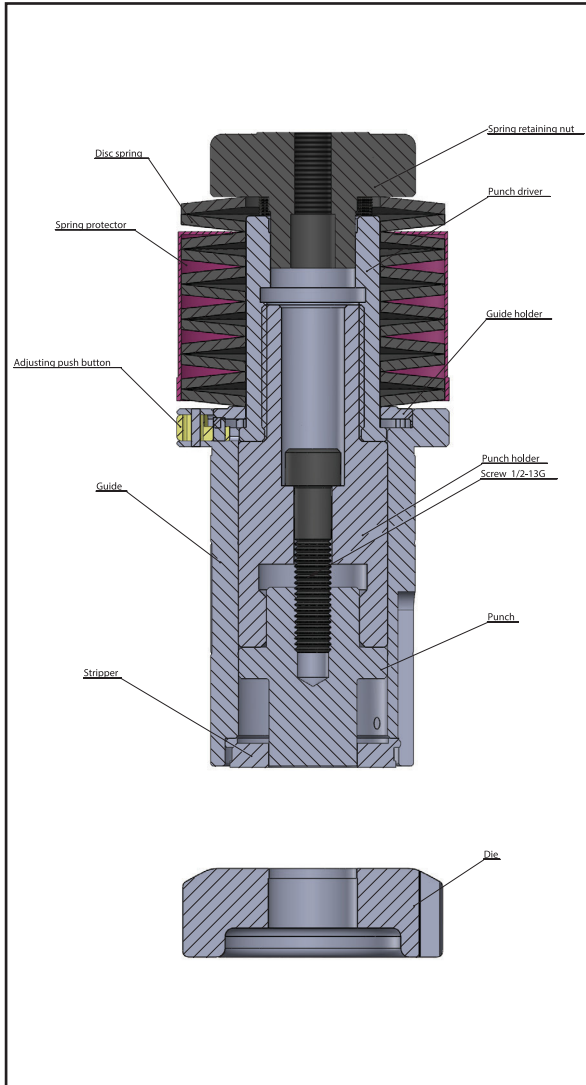
Description	Part code
Complete set	02-007-03
Punch	02-001-03
Die	002-03
Guide	02-004-03
Stripper	02-003-03
Punch holder group	02-005-03

COMPLETE SET SECTION VIEW



Created With Love

C STATION COMPLETE SET (03-ABS-007 C STATION)



Round/Shape (31.7-50.6mm)



Punch max. thickness is 6.3mm (mild steel)

Note

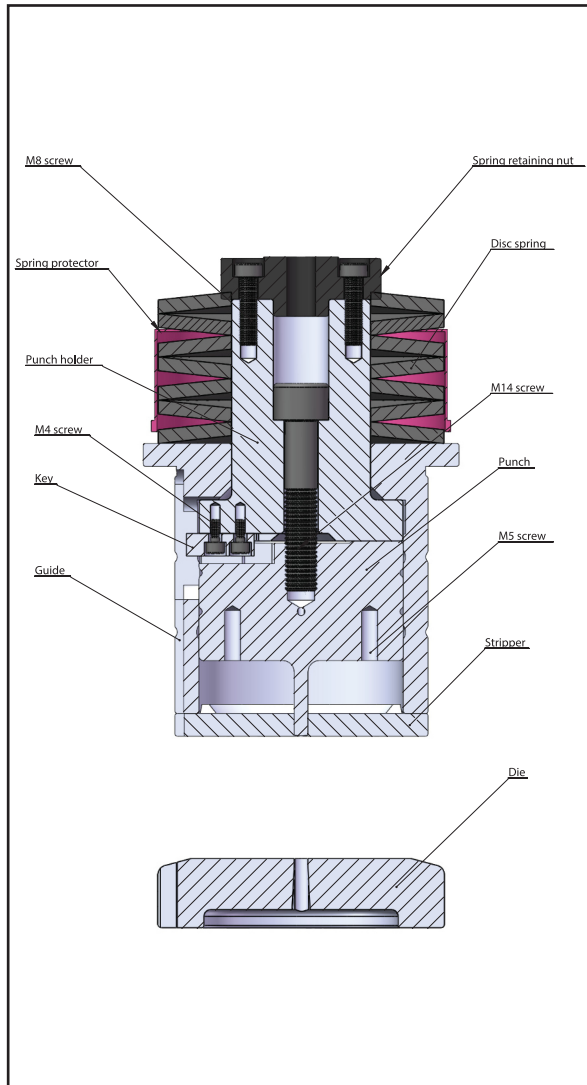
- Standard guide channels are 0°, 135° and 90°.
- Only punch, die and stripper alternation is enough in complete set when the size is changed.
- Without shim punch length adjustment is more quickly and conveniently.
- Punch length adjustment is done with the help of adjusting push button.
- Complete set includes punch holder group, punch, guide, stripper and die.
- Punch grind life is 5-8mm.
- Die grind life is 3.5 mm.

Description

Part code

Description	Part code
Complete set	03-007-03
Punch	03-001-03
Die	002-03
Guide	03-004-03
Stripper	03-003-03
Punch holder group	03-005-03

D STATION COMPLETE SET (02-ABS-007 D STATION)



Round/Shape (50.8-88.9mm)



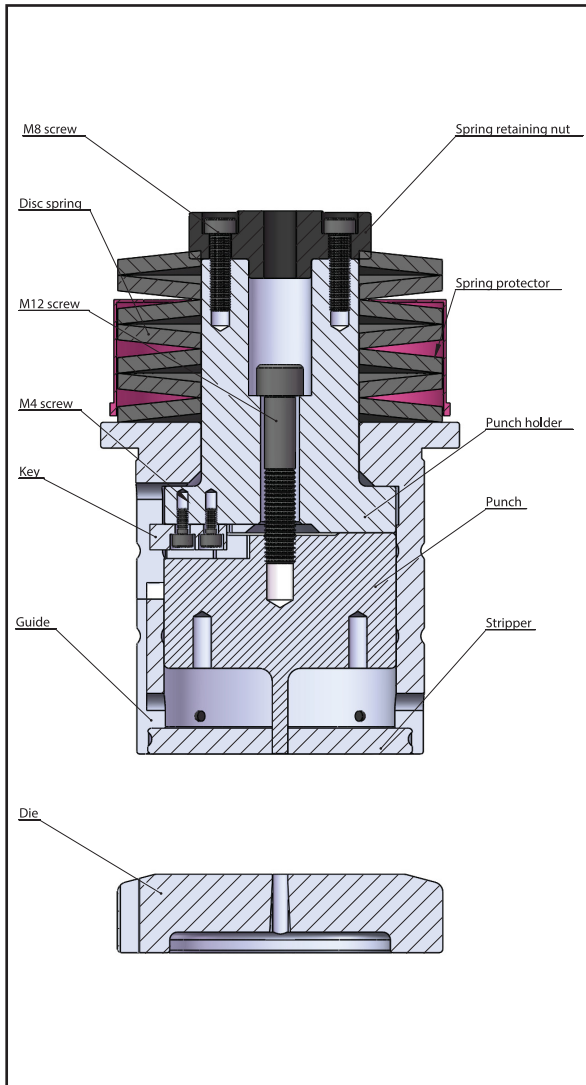
Punch max. thickness is 6.3mm (mild steel)

Note

- Standard guide channels are 0°, 135° and 90°.
- Only punch, die and stripper alternation is enough in complete set when the size is changed.
- Complete set includes punch holder group, punch, guide, stripper and die.
- Punch grind life together with shim is 5mm
- Die grind life is 3.5 mm.

Description	Part code
Complete set	02-07-007-04
Punch	02-07-001-04
Die	002-04
Guide	02-07-004-04
Stripper	02-07-003-04
Punch holder group	02-07-005-04

D STATION COMPLETE SET (02-007 D STATION)



Round/Shape (50.8-88.9mm)



Punch max. thickness is 6.3mm (mild steel)

Note

- Standard guide channels are 0°, 135° and 90°.
- Only punch, die and stripper alternation is enough in complete set when the size is changed.
- Complete set includes punch holder group, punch, guide, stripper and die.
- Punch grind life is 5mm with shim.
- Die grind life is 3.5 mm.

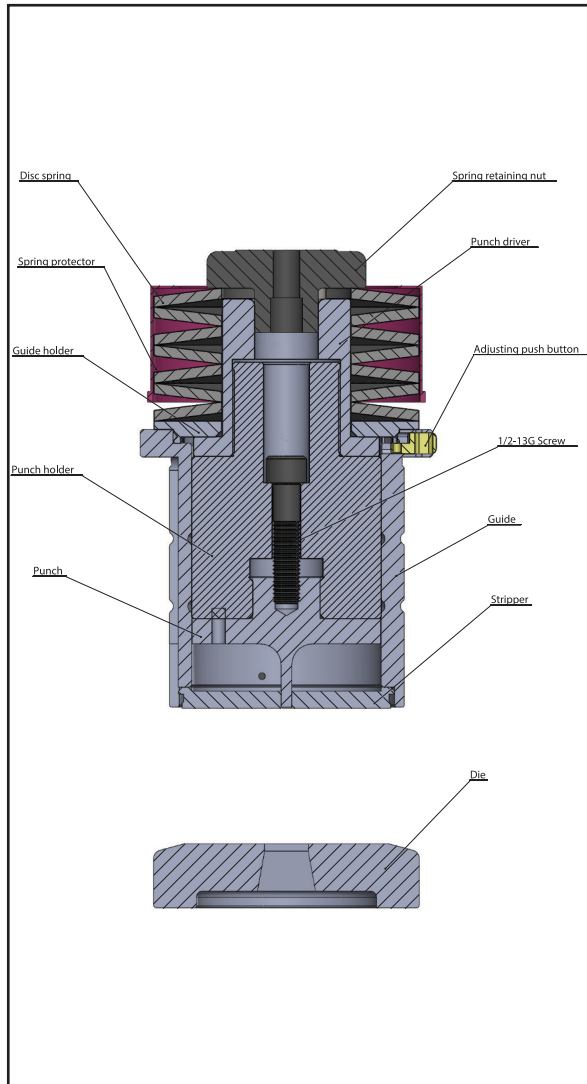
Description	Part code
Complete set	02-007-04
Punch	02-001-04
Die	002-04
Guide	02-004-04
Stripper	02-003-04
Punch holder group	02-005-04

COMPLETE SET SECTION VIEW



Created With Love

D STATION COMPLETE SET (03-ABS-007 D STATION)



Round/Shape (50.6-88.9mm)



Punch max. thickness is 6.3mm (mild steel)

Note

- Standard guide channels are 0°, 135° and 90°.
- Only punch, die and stripper alternation is enough in complete set when the size is changed.
- Without shim punch length adjustment is more quickly and conveniently.
- Punch length adjustment is done with the help of adjusting push button.
- Complete set includes punch holder group, punch, guide, stripper and die.
- Punch grind life is 5-8mm.
- Die grind life is 3.5 mm.

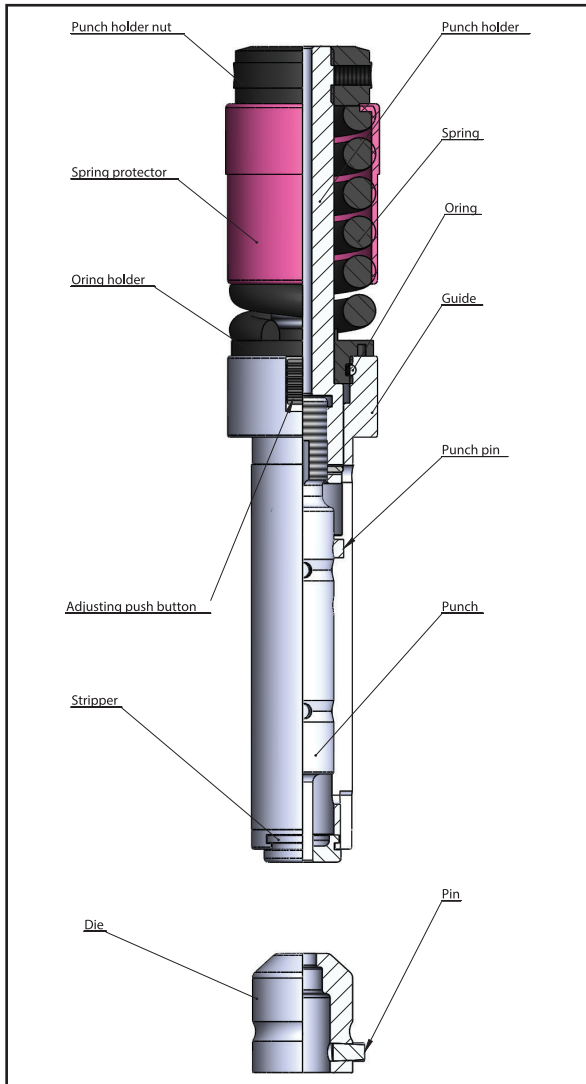
Description	Part code
Complete set	03-007-04
Punch	03-001-04
Die	002-04
Guide	03-004-04
Stripper	03-003-04
Punch holder group	03-005-04

PATENT TOOL'S SECTION VIEW



Created With Love

A STATION COMPLETE SET (01-ABS-007 A STATION PATENT TOOL)



Round/Shape (1.6-12.7mm)



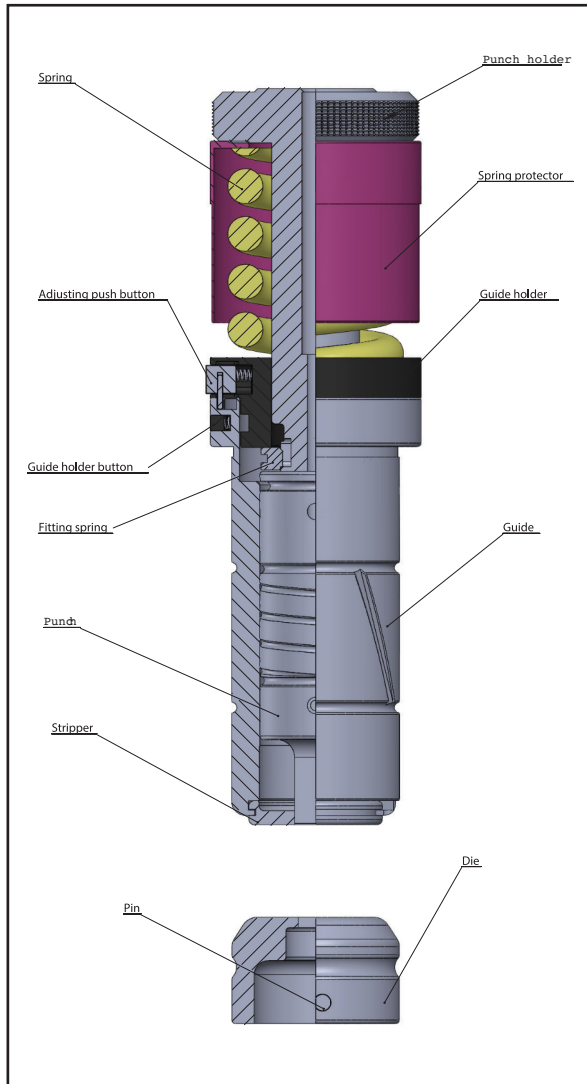
Punch max. thickness is 3.5mm (mild steel)

Note

- Square guide channels are 0°, 90°, 135°.
- Other shape guide channels are 0° and 90°.
- Punch length adjustment is done with the help of adjusting push button.
- Punch length adjustment is more practical than others.
- Complete set includes punch holder group, punch, guide, stripper and die.
- Punch grind life is 5-6mm.
- Die grind life is 3.5 mm.

Description	Part code
Complete set	01-007-01-SPA
Punch	01-001-01
Die	001-01
Guide	01-004-01-SPA
Stripper	01-003-01
Punch holder group	01-005-01-SPA

B STATION COMPLETE SET (01-ABS-007 B STATION PATENT TOOL)



Round/Shape (12.7-31.7mm)



Punch max. thickness is 6.3mm (mild steel)

Note

- Square guide channels are 0°, 90°, 135°.
- Other shape guide channels are 0° and 90°.
- Punch length adjustment is done with the help of adjusting push button.
- Punch length adjustment is more practical than others.
- Guide's assembly and disassembly are more practical than standard punches by dint of guide holder button.
- Complete set includes punch holder group, punch, guide, stripper and die.
- Punch grind life is 5-6mm.
- Die grind life is 3.5 mm.

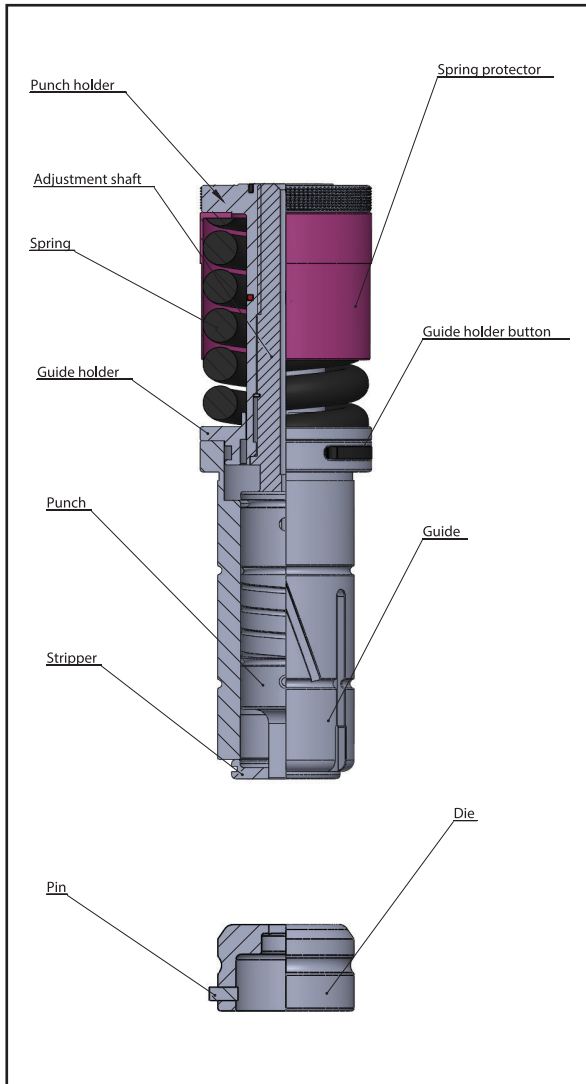
Description	Part code
Complete set	01-007-02-SPB1
Punch	01-001-02
Die	001-02
Guide	01-004-02-SPB1
Stripper	01-003-02
Punch holder group	01-005-02-SPB1

PATENT TOOL'S SECTION VIEW



Created With Love

B STATION COMPLETE SET (01-ABS-007 B STATION PATENT TOOL FOR THICK SHEET)



Round/Shape (12.7-31.7mm)



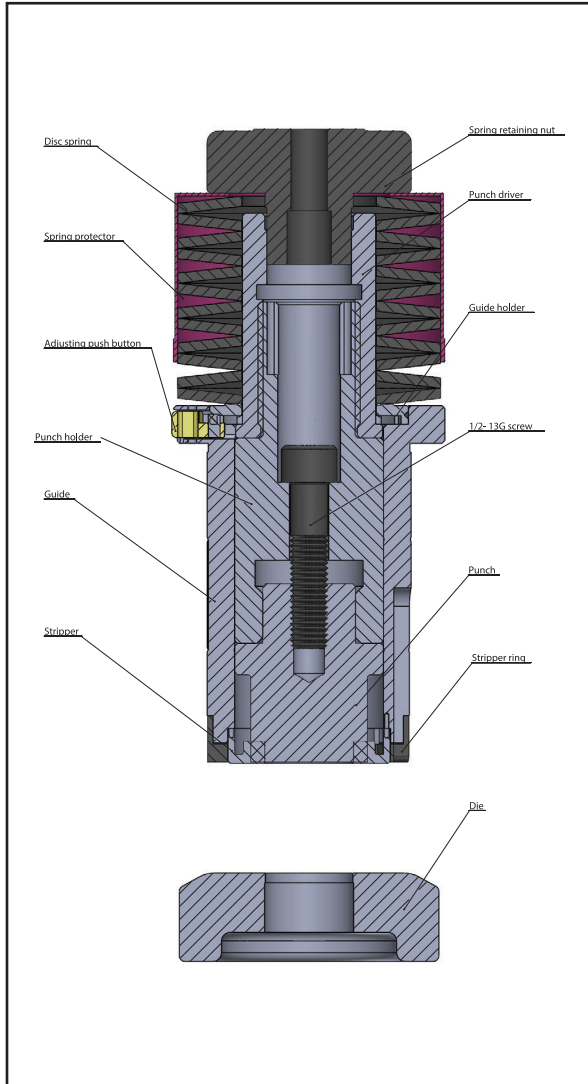
Punch max. thickness is 6.3mm (mild steel)

Note

- Square guide channels are 0°, 90°, 135°.
- Other shape guide channels are 0° and 90°.
- It is designed for cutting ST52 etc sheets that are between 3-6mm.
- Guide's assembly and disassembly are more practical than standard punches by dint of guide holder button.
- Punch length adjustment is more practical than others.
- Complete set includes punch holder group, punch, guide, stripper and die.
- Punch grind life is 10-12mm.
- Die grind life is 3.5 mm.

Description	Part code
Complete set	01-007-02-SPB2
Punch	01-001-02
Die	001-02
Guide	01-004-02-SPB2
Stripper	01-003-02
Punch holder group	01-005-02-SPB2

**C STATION COMPLETE SET
(01-ABS-007-AUTO STRIPPER C STATION PATENT TOOL)**



Round/Shape (31.7-50.6mm)



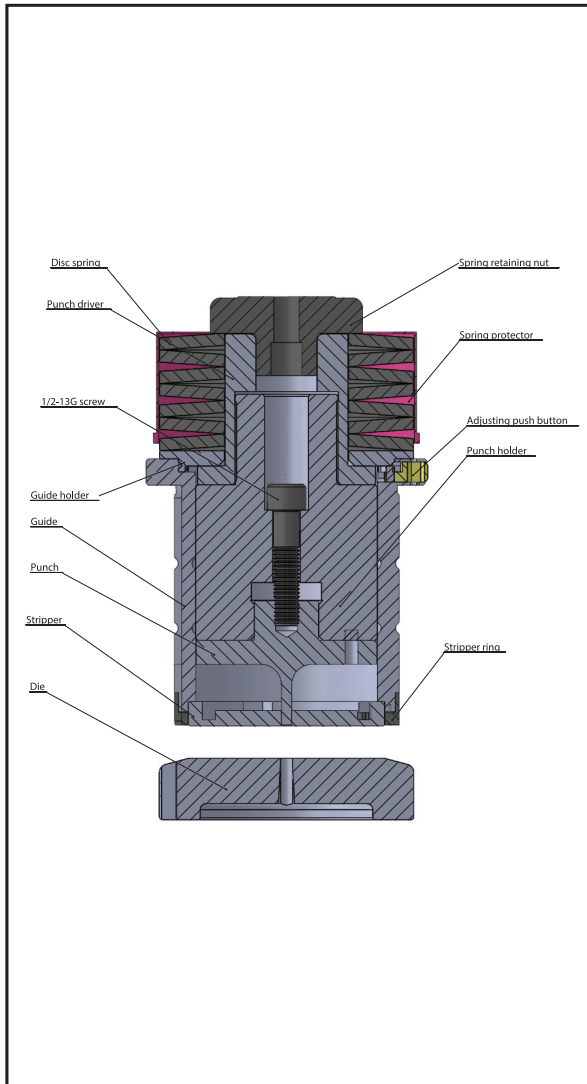
Punch max. thickness is 6.3mm (mild steel)

Note

- Standard guide channels are 0°, 90°, 135°.
- Stripper's assembly and disassembly are done easy and practic with help of stripper ring.
- Without shim punch length adjustment is more quickly and conveniently.
- Punch length adjustment is done with the help of adjusting push buton.
- Complete set includes punch holder group , punch, guide , stripper and die.
- Punch grind life is 5-8mm.
- Die grind life is 3.5 mm.

Description	Part code
Complete set	01 -007-03-SPC
Punch	01 -001-03
Die	001-03
Guide	01-004-03-SPC
Stripper	01-003-03-SPC
Punch holder group	01-005-03-SPC

D STATION COMPLETE SET (01-ABS-007-AUTO STRIPPER D STATION PATENT TOOL)



Round/Shape (50.6-88.9mm)



Punch max. thickness is 6.3mm (mild steel)

Note

- Standard guide channels are 0°, 90°, 135°.
- Stripper's assembly and disassembly are done easy and practic with help of stripper ring.
- Without shim punch length adjustment is more quickly and conveniently.
- Punch length adjustment is done with the help of adjusting push button.
- Complete set includes punch holder group, punch, guide, stripper and die.
- Punch grind life is 5-8mm.
- Die grind life is 3.5 mm.

Description	Part code
Complete set	01 -007-04-SPD
Punch	01 -001-004
Die	001-04
Guide	01-004-04-SPD
Stripper	01-003-04-SPD
Punch holder group	01-005-04-SPD

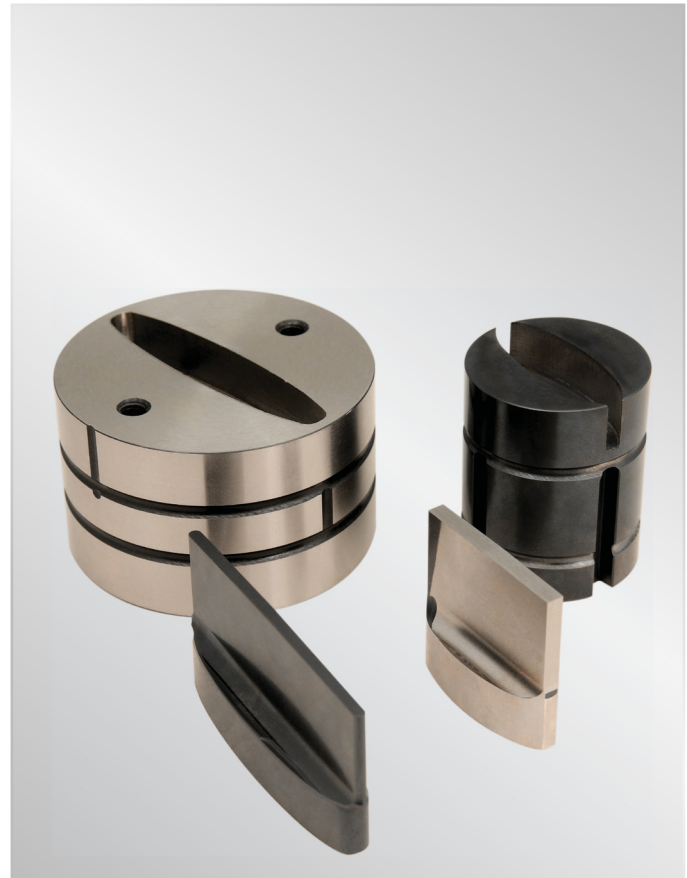
MULTI - TOOL



Note

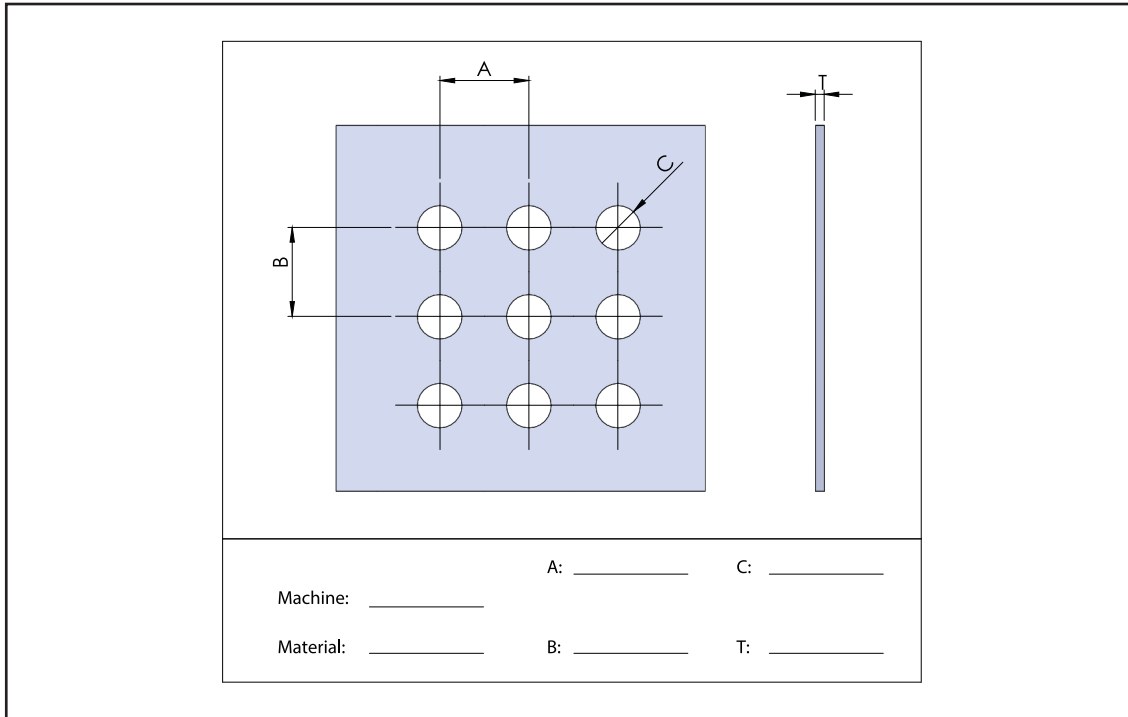
We produce punch for different brands's multi-tool for example such as, Wilsoon Tool, Euromac, Durma, Ermaksan, Mate.

INSERT TOOL



Note

Purchasing insert punch is enough when cutting life is finished. This helps reducing the cost.



Note

- Punches are designed as of insert punch.
- Space of holes must be $2 \times T$

MATE TYPE



MURATA TYPE



TRM TYPE



SLV TYPE



ERM TYPE



FORMING TOOLS



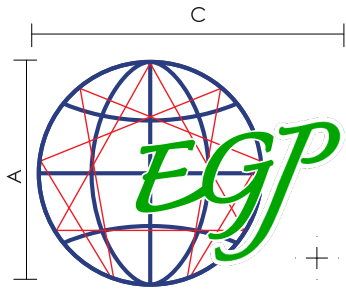
Created With Love



LOGO



Created With Love



FORM UP

	A: _____	C: _____
Machine: _____	B: _____	H: _____ T: _____
Material: _____		



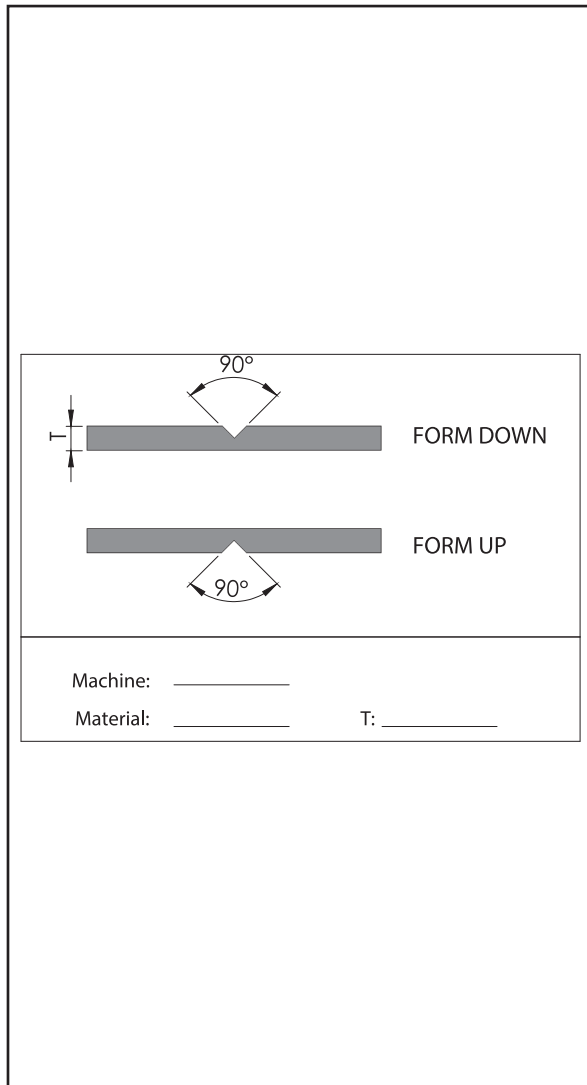
Note

- Min. B size must be 2xT.
- Please fill in the above form

CENTERPOINT

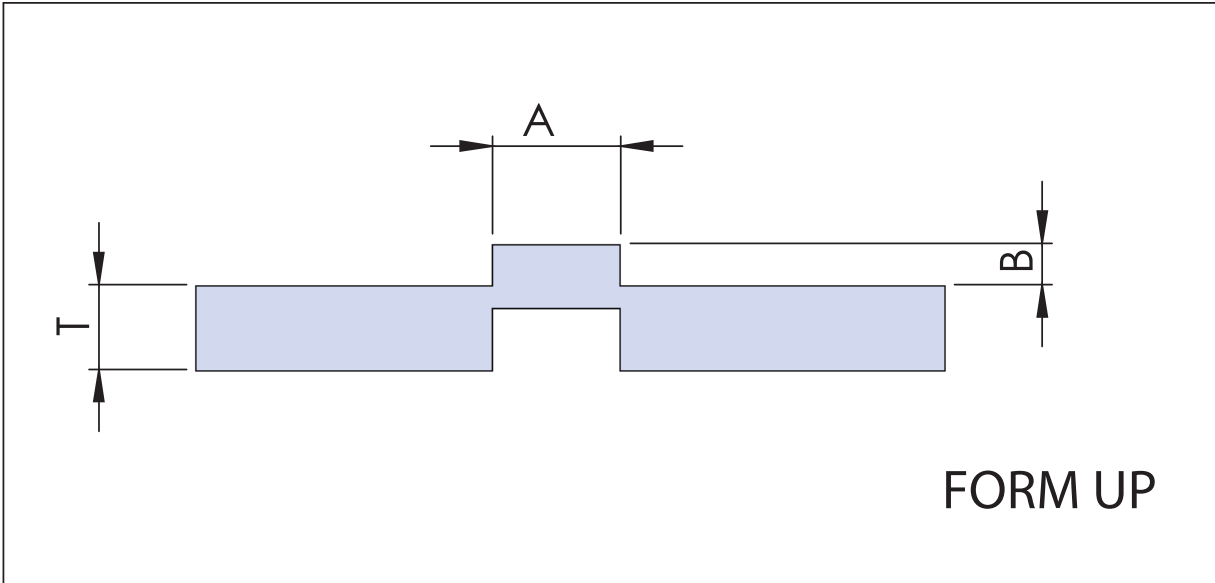


Created With Love



Note

- No cutting.
- Form's depth is done either increase or decrease with punch length adjustment.
- Two types : form up and form down.
- Angle : 90°, max. thickness : 6.0mm.
- Please fill in the above form.

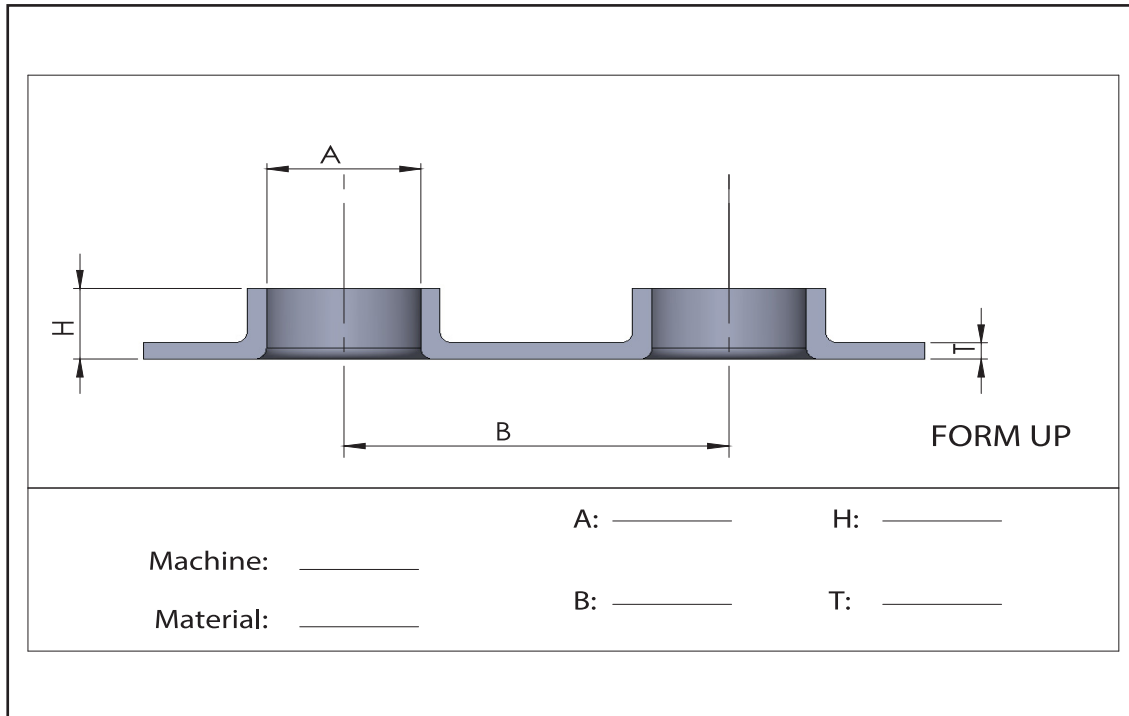


FORM UP

Machine: _____ A: _____ T: _____
Material: _____ B: _____

Note

- Max. B size : 0.6 X thickness.
- Two types : form up and form down.
- Please fill in the above form.

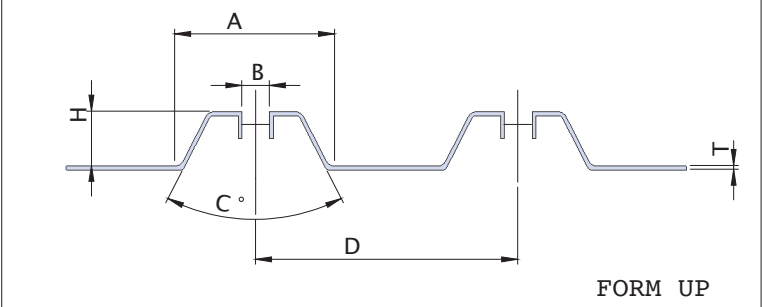


Note

- First it is required cutting.
- Replaceable insert design on extrusion.
- Max. thickness : 2mm for mild steel or Al. Sheet
1mm for stainless steel.
- Forming height max.H : over 3x thread pitch.
- Two types : form up and form down.
- Please fill in the above form.



EMBOSS AND EXTRUSION



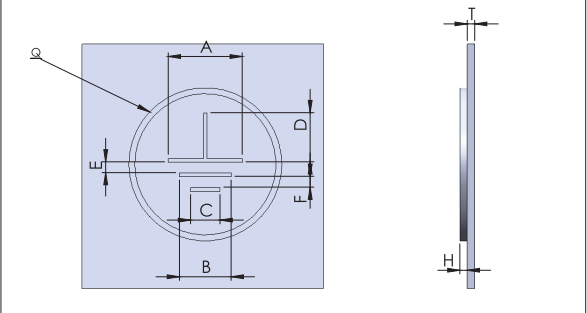
FORM UP

Machine: _____	A: _____	C: _____	H: _____
Material: _____	B: _____	D: _____	T: _____

Note

- Complete set emboss and extrusion one hit.
- Only form up.
- Please fill in the above form.

STAMPING



FORM UP

Machine: _____	A: _____	D: _____	Q: _____
Material: _____	B: _____	E: _____	H: _____
	C: _____	F: _____	T: _____

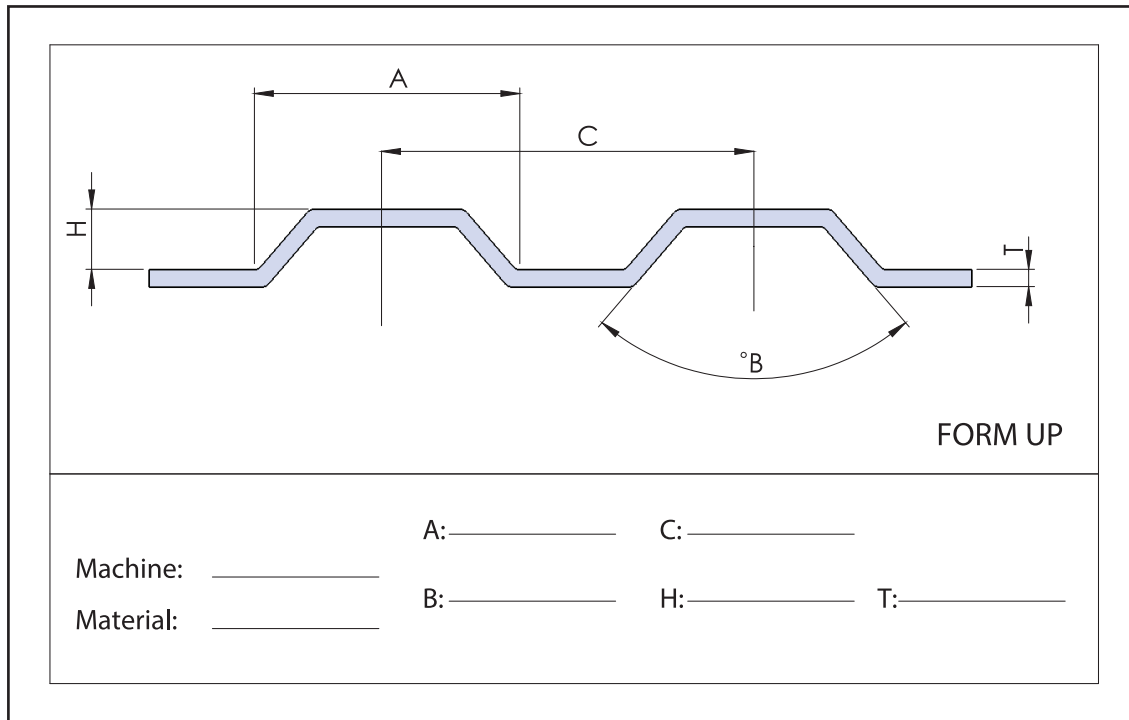
Note

- No cutting.
- Two types : form up and form down.
- Make other symbol besides ground symbol.
- Please fill in the above form.

EMBOSS

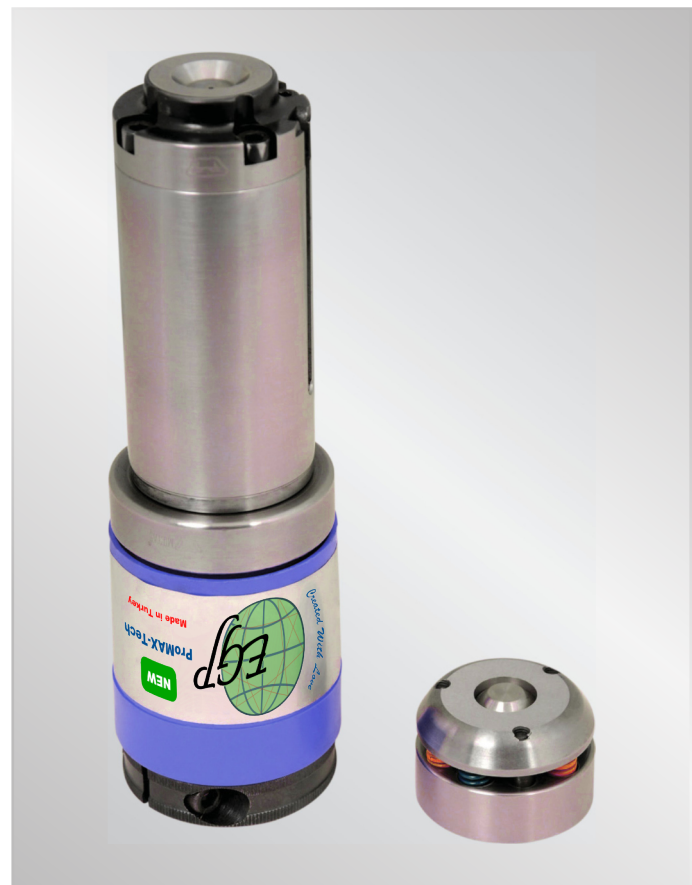


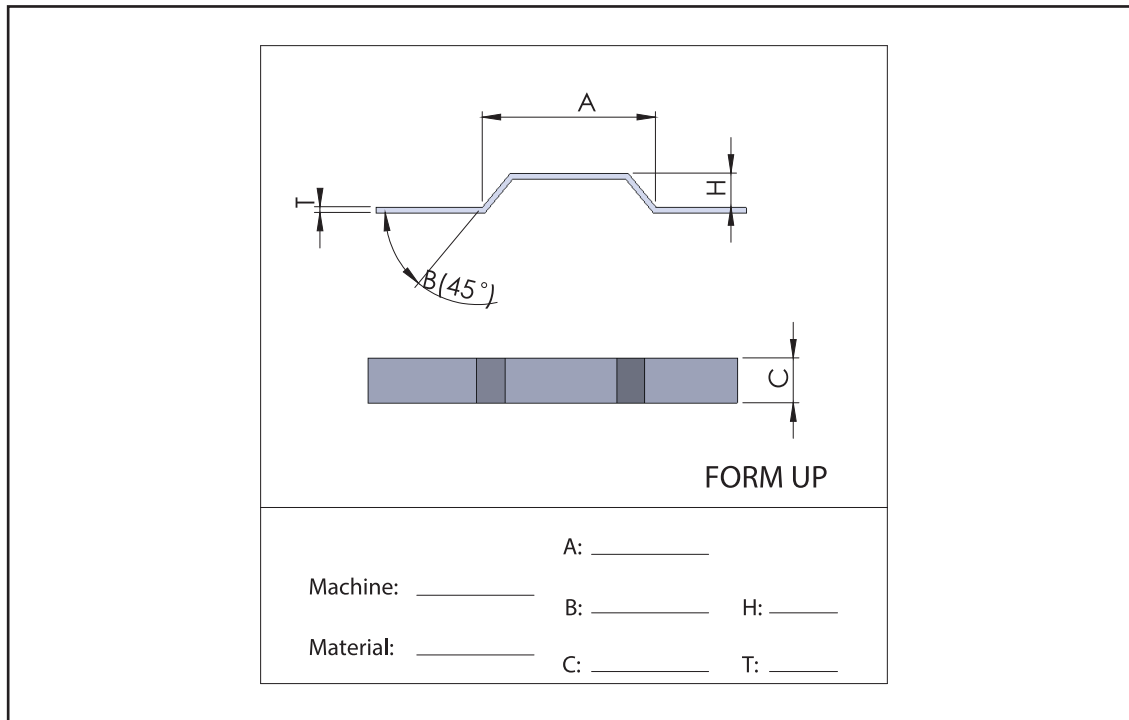
Created With Love



Note

- First it is required cutting.
- Option : round or shape.
- Two types : form up and form down.
- Please fill in the above form.

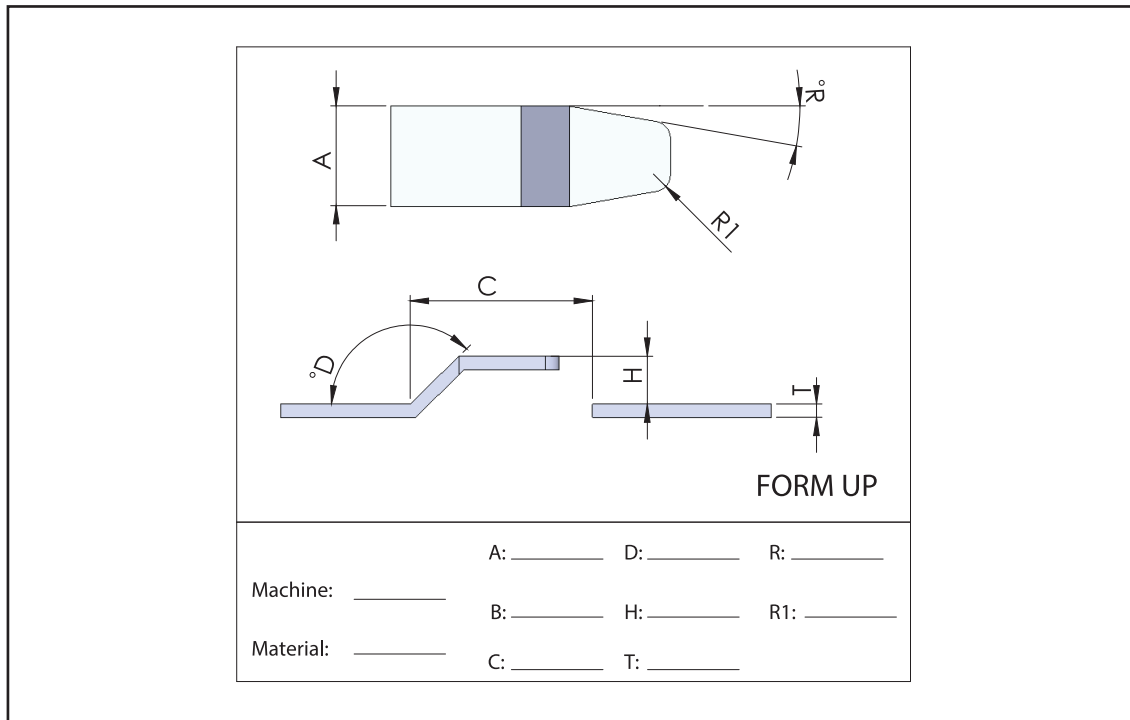




Note

- Design single or double bridge.
- Two types : form up and form down.
- Please fill in the above form





Note

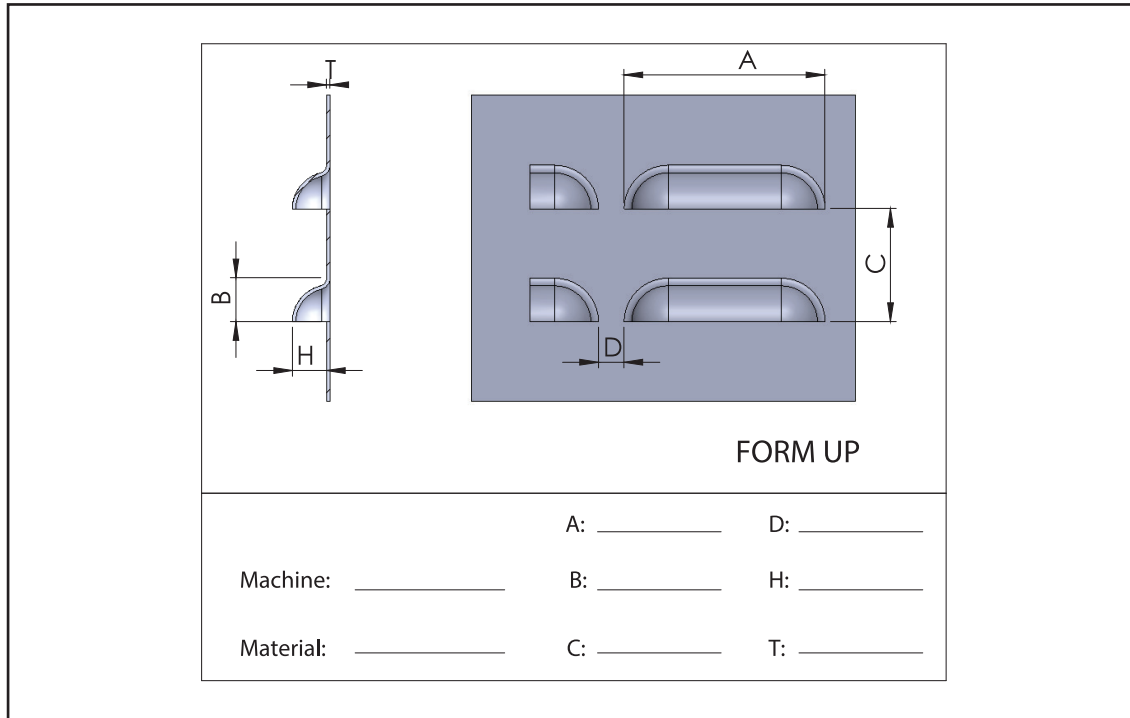
- Tooling is made for specific thickness.
- Only form up.
- Please fill in the above form.



LOUVER



Created With Love

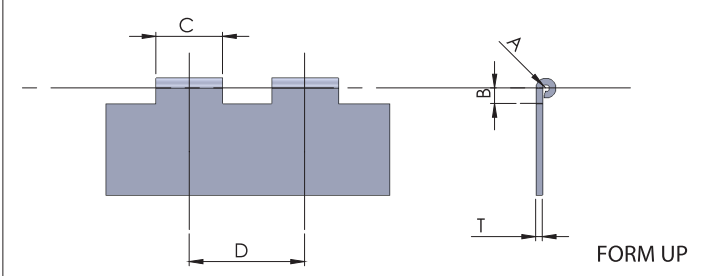


Note

- Tooling is made for specific thickness.
- Adjust length without shim, replaceable insert.
- Only form up.
- Please fill in the above form.



HINGLE



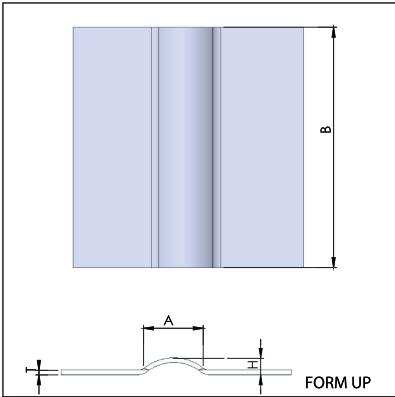
Machine: _____
Material: _____

A: _____ C: _____
B: _____ D: _____ T: _____

Note

- Tooling is made for specific thickness.
- First it is required cutting.
- First for curling second for forming.
- Only form up.
- Please fill in the above form.

RIBTOOL



Machine: _____
Material: _____

A: _____ H: _____
B: _____ T: _____

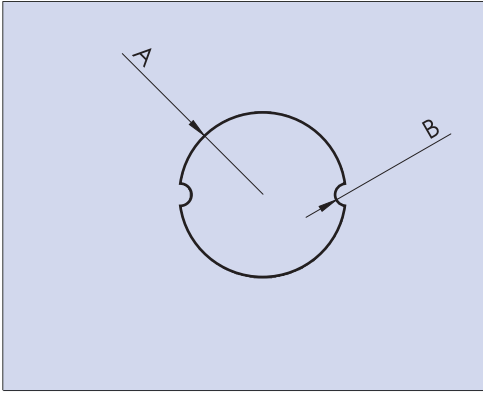
Note

- Two types form up and form down.
- Increment of nibbling rib should be 0.5 - 2.0mm.
- Please fill in the above form.

KNOCKOUT



Created With Love

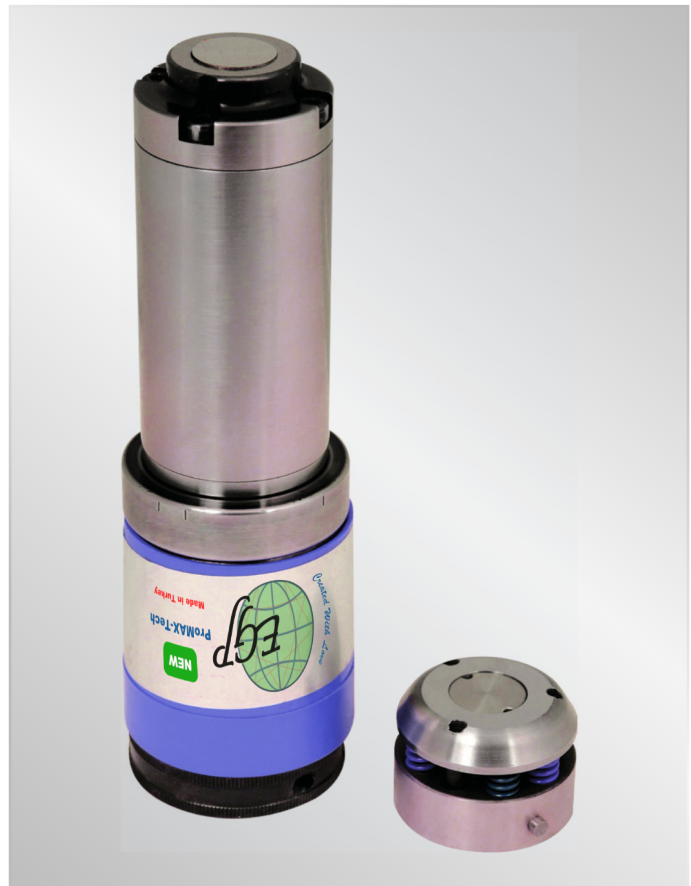


FORM UP

Machine: _____	A: _____
Material: _____	B: _____

Note

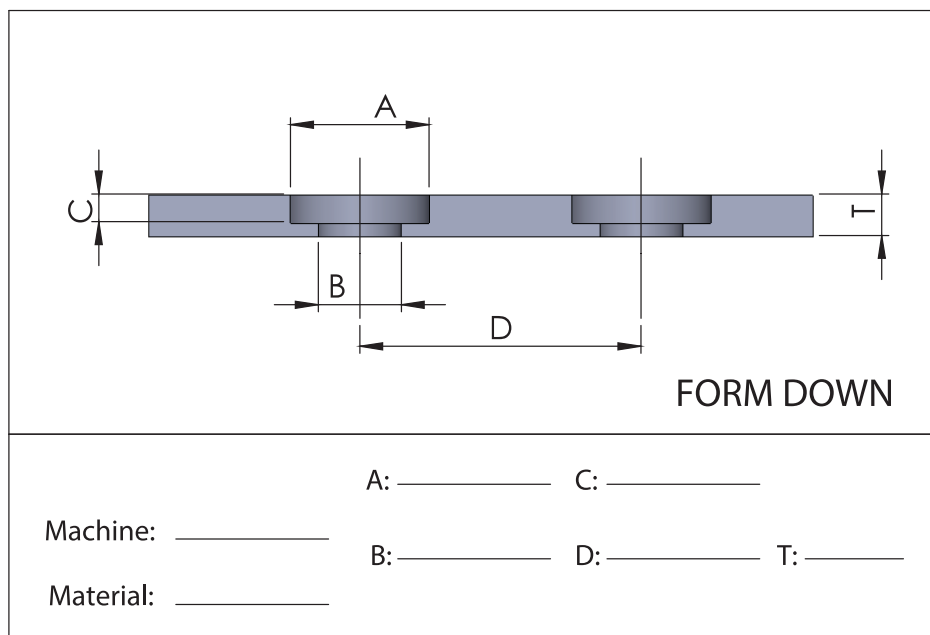
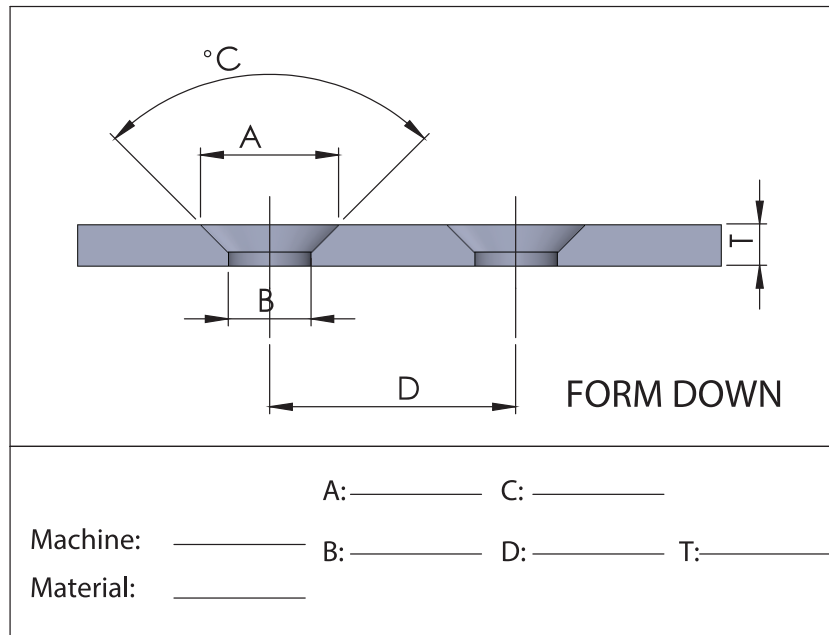
- Only form up.
- Please fill in the above form



COUNTERSINK



Created With Love



Note

- First it is required cutting.
- Change hole size to get different depth.
- Two types : form up and form down.
- Please fill in the above form.

ADAPTOR

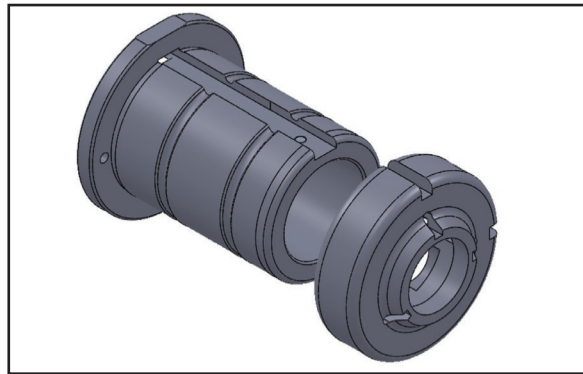
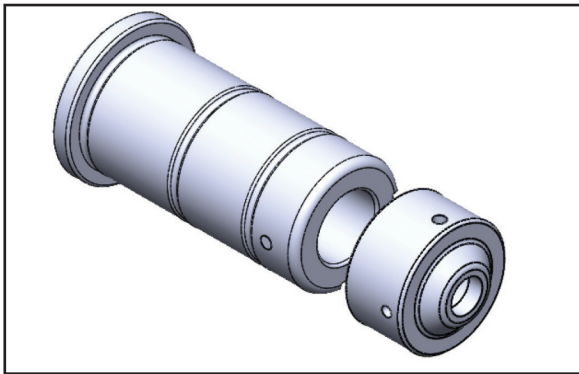


Created With Love



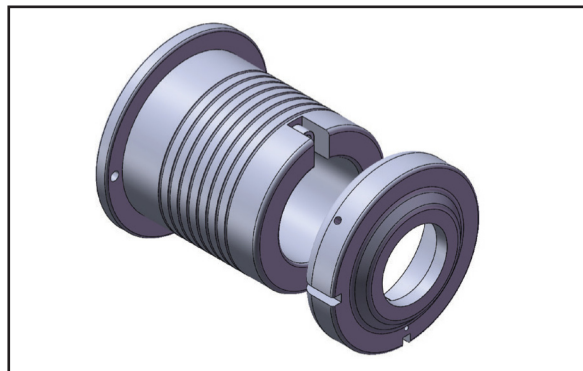
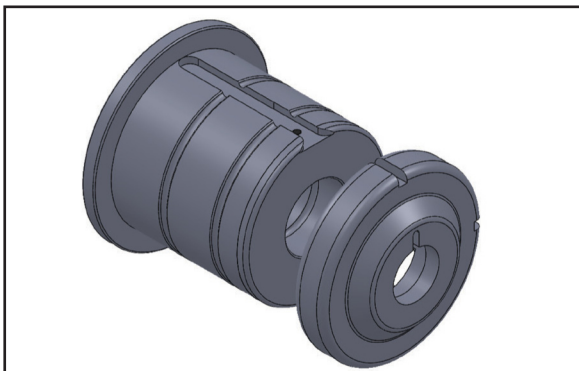
B-A

C-B



D-B

D-C



ALIGNMENT TOOL

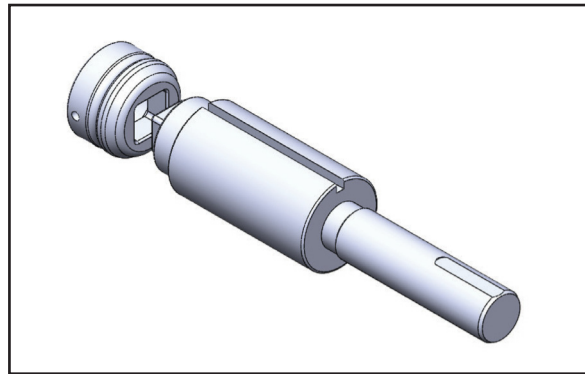
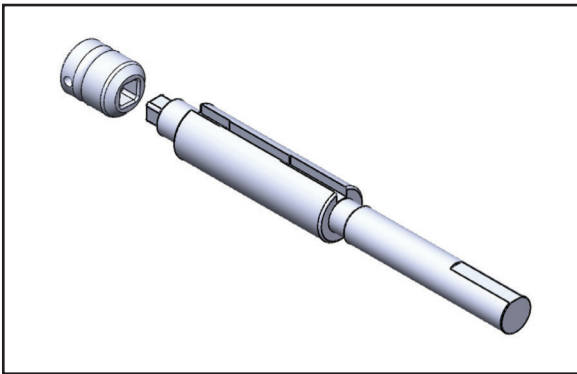


Created With Love



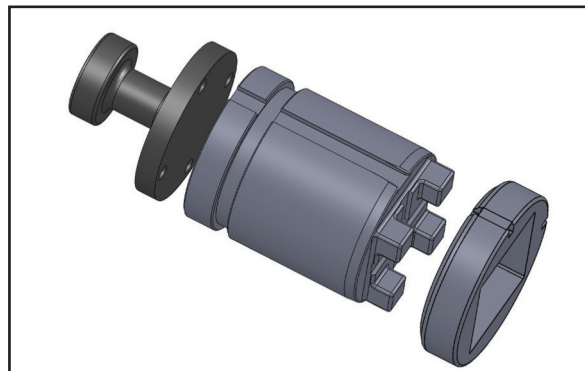
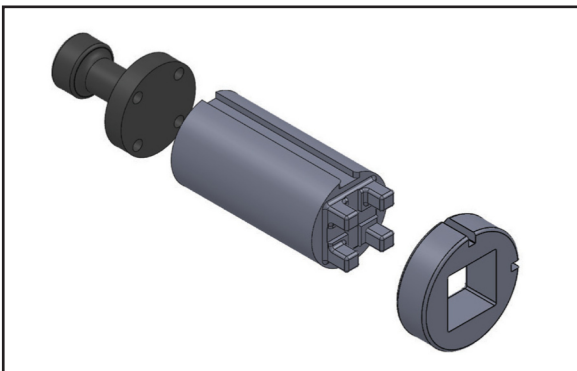
A STATION

B STATION



C STATION

D STATION



SHIM



KEY



CLAMP



Created With Love



Exxtral coatings are ideal, particularly for running at elevated temperatures mold and tools.

Specifications

- High oxidation resistance
- Raised temperature hardness
- Resistance to chemical effects
- Low conductivity number

Advantages

- High cutting speed
- Long tool life
- Improved surface quality
- Non refrigerate dry process

Hardness	= 3300 ± 300 HV
Running temperature	= 800 °C - 1470 °F
Coefficient of friction	= 0.7
Coating thickness	= 1-3 μm
Colour	= Blakish gray



VALUES OF STROKE ACCORDING TO COATED TYPES

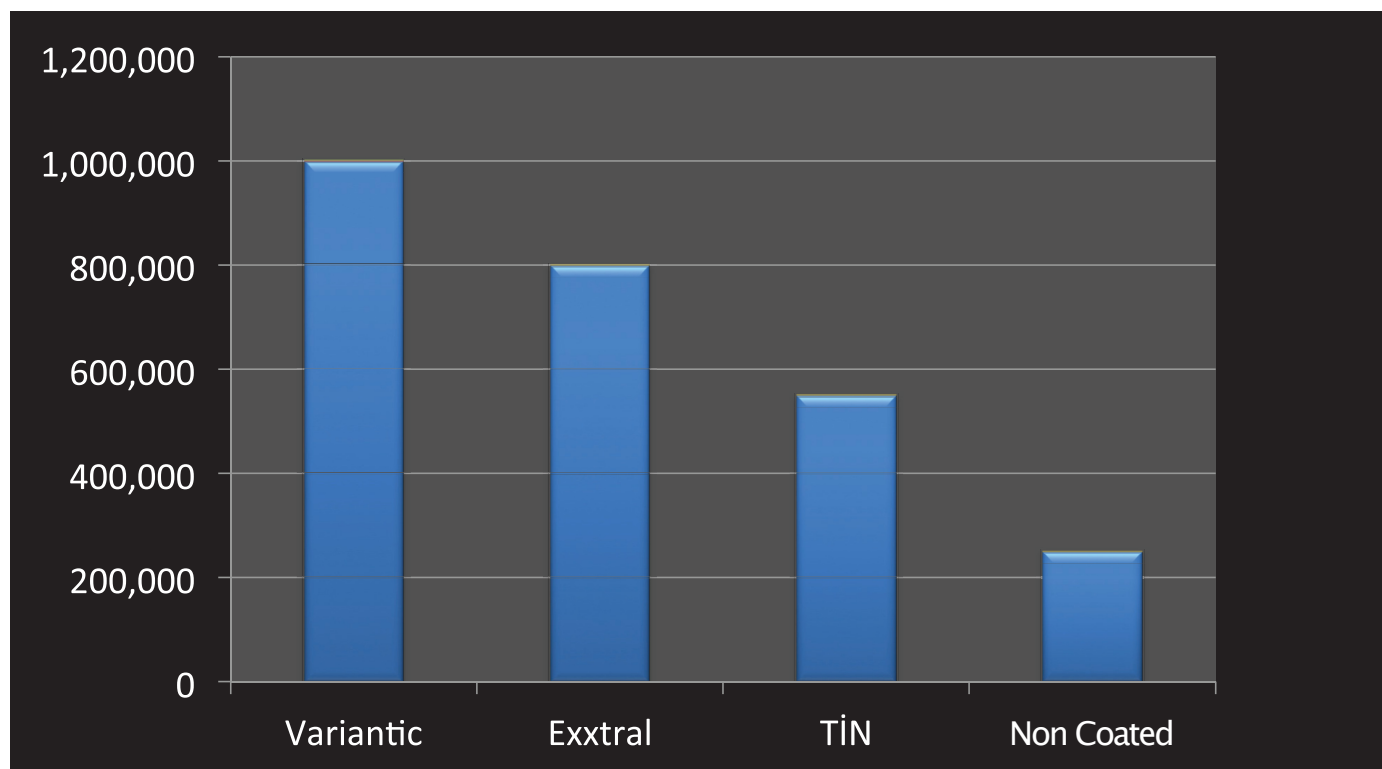


Created With Love

Modifications in the values of stroke are shown in table according to the coated type. It is possible to reach this values in case of proper conditions of use.

Proper conditions of use;

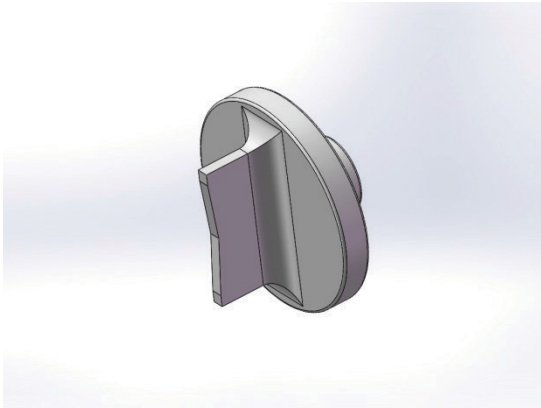
- Right grinding in time
- Maintenance of turret and tool
- Station setting (alignment)
- The selection of suitable die clearance



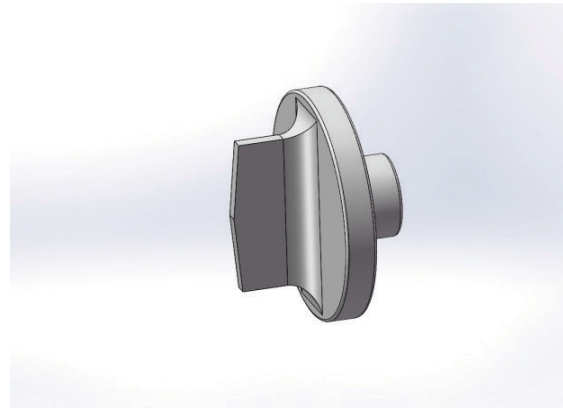
GRINDING SHAPES



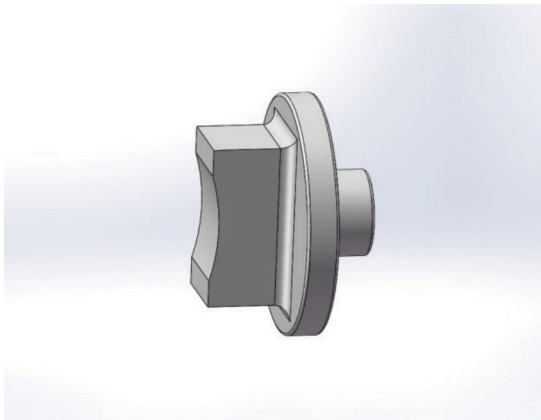
Created With Love



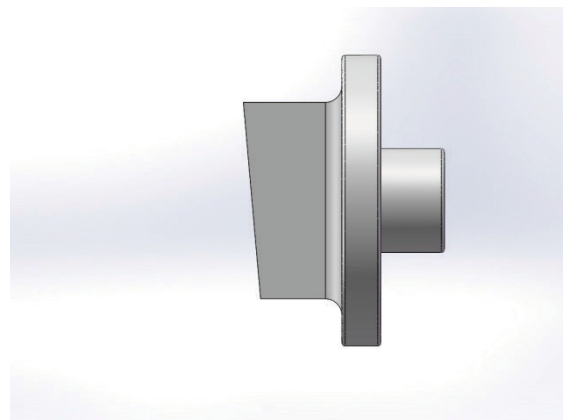
Interior roof



Exterior roof



Concove

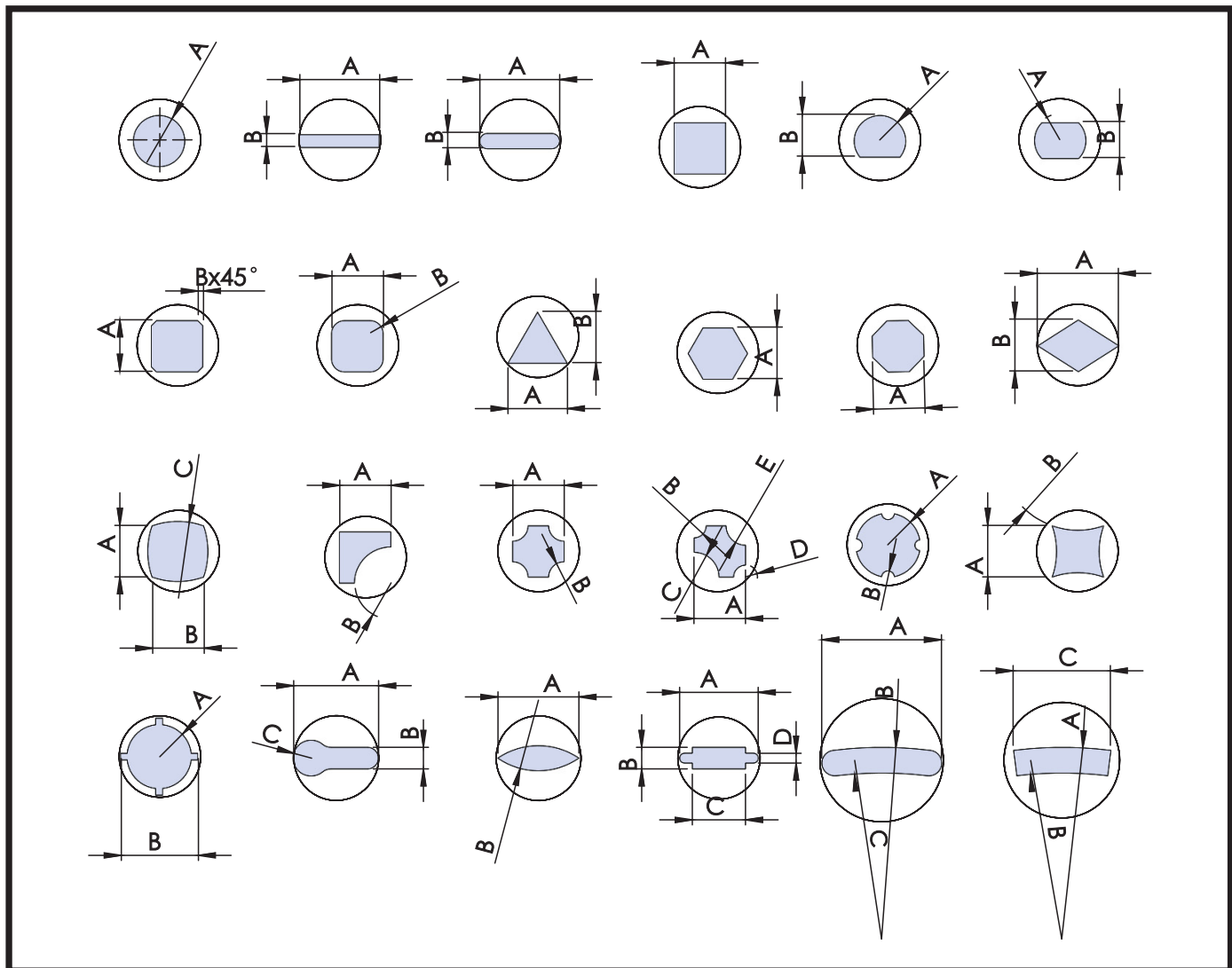


Guillotine

SHAPE CLASSES



Created With Love



CLEARANCE TABLE



Created With Love

BRASS SHEET

Thickness	%	Clearance
0,5	0,11	0,06
1,00	0,11	0,11
1,50	0,11	0,17
2,00	0,11	0,22
2,50	0,11	0,28
3,00	0,11	0,33
3,50	0,11	0,39
4,00	0,11	0,44
4,50	0,11	0,50
5,00	0,11	0,55
5,50	0,11	0,61
6,00	0,11	0,66

DKP-GALVANIZE SHEET

Thickness	%	Clearance
0,5	0,20	0,10
1,00	0,20	0,20
1,50	0,20	0,30
2,00	0,20	0,40
2,50	0,20	0,50
3,00	0,20	0,60
3,50	0,20	0,70
4,00	0,20	0,80
4,50	0,20	0,90
5,00	0,20	1,00
5,50	0,20	1,10
6,00	0,20	1,20

COPPER SHEET

Thickness	%	Clearance
0,5	0,12	0,06
1,00	0,12	0,12
1,50	0,12	0,18
2,00	0,12	0,24
2,50	0,12	0,30
3,00	0,12	0,36
3,50	0,12	0,42
4,00	0,12	0,48
4,50	0,12	0,54
5,00	0,12	0,60
5,50	0,12	0,66
6,00	0,12	0,72

BLACK SHEET

Thickness	%	Clearance
0,5	0,24	0,12
1,00	0,24	0,24
1,50	0,24	0,36
2,00	0,24	0,48
2,50	0,24	0,60
3,00	0,24	0,72
3,50	0,24	0,84
4,00	0,24	0,96
4,50	0,24	1,08
5,00	0,24	1,20
5,50	0,24	1,32
6,00	0,24	1,44

ALUMINIUM SHEET

Thickness	%	Clearance
0,5	0,10	0,05
1,00	0,10	0,10
1,50	0,10	0,15
2,00	0,10	0,20
2,50	0,10	0,25
3,00	0,10	0,30
3,50	0,10	0,35
4,00	0,10	0,40
4,50	0,10	0,45
5,00	0,10	0,50
5,50	0,10	0,55
6,00	0,10	0,60

STAINLESS-CROM-INOX SHEET

Thickness	%	Clearance
0,5	0,25	0,13
1,00	0,25	0,25
1,50	0,25	0,38
2,00	0,25	0,50
2,50	0,25	0,63
3,00	0,25	0,75
3,50	0,25	0,88
4,00	0,25	1,00
4,50	0,25	1,13
5,00	0,25	1,25
5,50	0,25	1,38
6,00	0,25	1,50



PUNCH PRESS TOOLS

EAST GATE PROJECT MAKİNE SANAYİ TİCARET LİMİTED ŞİRKETİ

ADRES: İhlamurkuyu Mah. Didenur Sk. No:1/7 34771 Ümraniye / İSTANBUL

TEL: +90 507 651 36 66 **WEB:** www.egp-universe.com